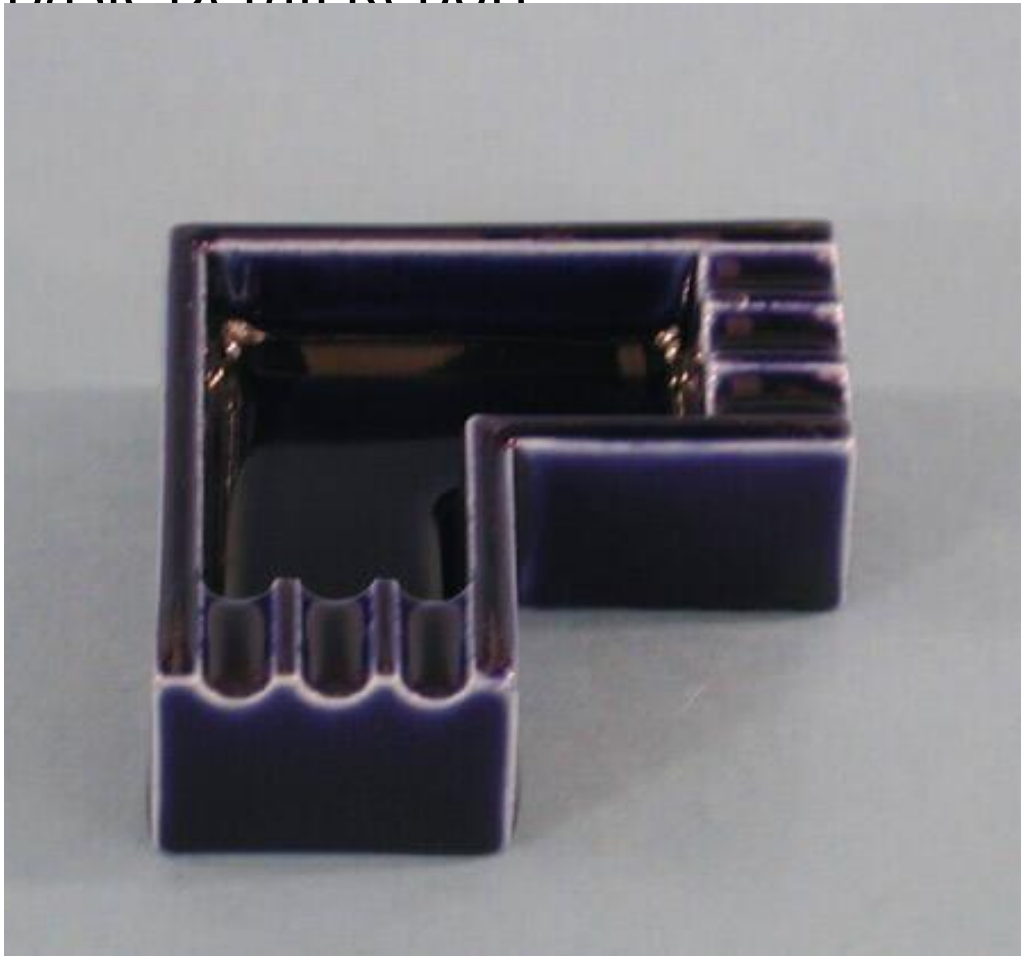


Basic Detail Report



Title Ashtray

Date about 1935

Primary Maker Hawkinson Porcelain

Medium Mold-formed porcelain with a blue glaze

Description Porcelain ashtray with a deep blue glaze, reflecting the Art Deco and streamlined styles of the 1920s, 1930s, and 1940s. The foot of the ashtray is shaped like an "L" with two equal-length "arms" extending from the 90 degree angle; the arms of the ashtray are 1 1/2 inches wide. The width of the arms creates the portion of the ashtray where ashes were to fall. At the end of each arm, on the top of the ashtray, are three indentations in the thick end wall of the arm. These were meant to hold the cigarettes as they rested in the ashtray.

Basic Detail Report

There are two small chips in the glaze and porcelain. One is at an end of an arm near the foot, and the other is at the bottom corner of the "L". The very top surfaces of the ashtray have light scratches.

Dimensions Primary Dimensions (height x width x depth): 1 x 3 x 3in. (2.5 x 7.6 x 7.6cm)