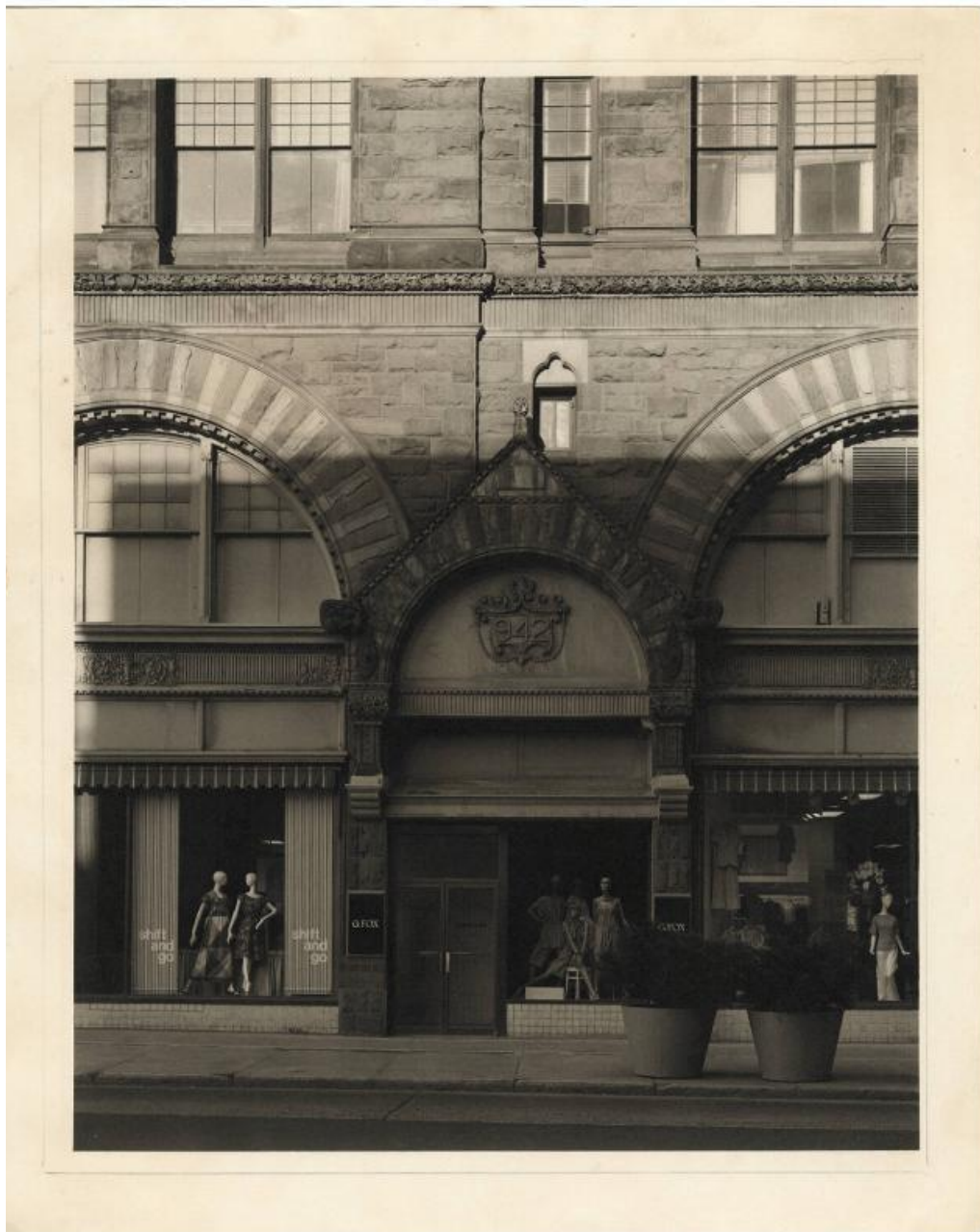


Basic Detail Report



Title G. Fox storefront, Hartford

Date 1970-1989

Primary Maker Charles Reich

Medium Photography; platinum on paper

Description Photograph of the G. Fox building (Brown Thomson building) at 942

Main Street in Hartford. Mannequins are visible in the store windows, wearing dresses and lightweight pants.

Basic Detail Report

Dimensions Primary Dimensions (image height x width): $9 \frac{9}{16} \times 7 \frac{9}{16}$ in. (24.3

$\times 19.2$ cm) Sheet (height x width): $10 \frac{15}{16} \times 8 \frac{15}{16}$ in. (27.8 \times 22.7cm)