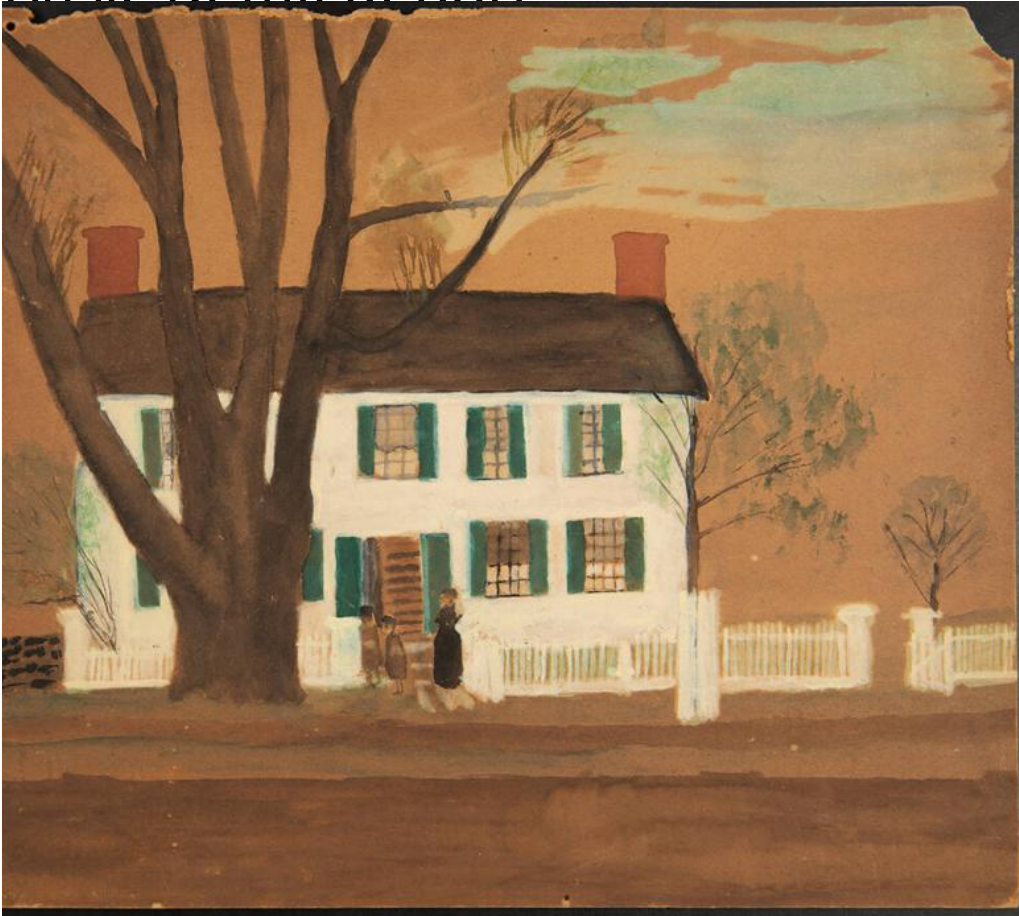


Basic Detail Report



Title Miss Amanda Smith Frink

Primary Maker Louis Grosvenor Frink

Medium Drawing; pencil, watercolor, and gouache on brown paper on cardboard

Description A large white house with green-shuttered windows and a dark roof rises behind two red brick chimneys. The front door stands open, revealing a warmly lit interior and a staircase just inside. At the entrance, a woman in a black gown is accompanied by two small children dressed in brown. A white picket fence encircles the property, while a prominent, thick deciduous tree stands in the foreground.

Basic Detail Report

Dimensions Primary Dimensions (image height x width): 15 3/4 x 20in. (40 x 50.8

cm) Sheet (height x width): 15 3/4 x 20in. (40 x 50.8cm) Mount (height x width): 15

3/4 x 20in. (40 x 50.8cm)