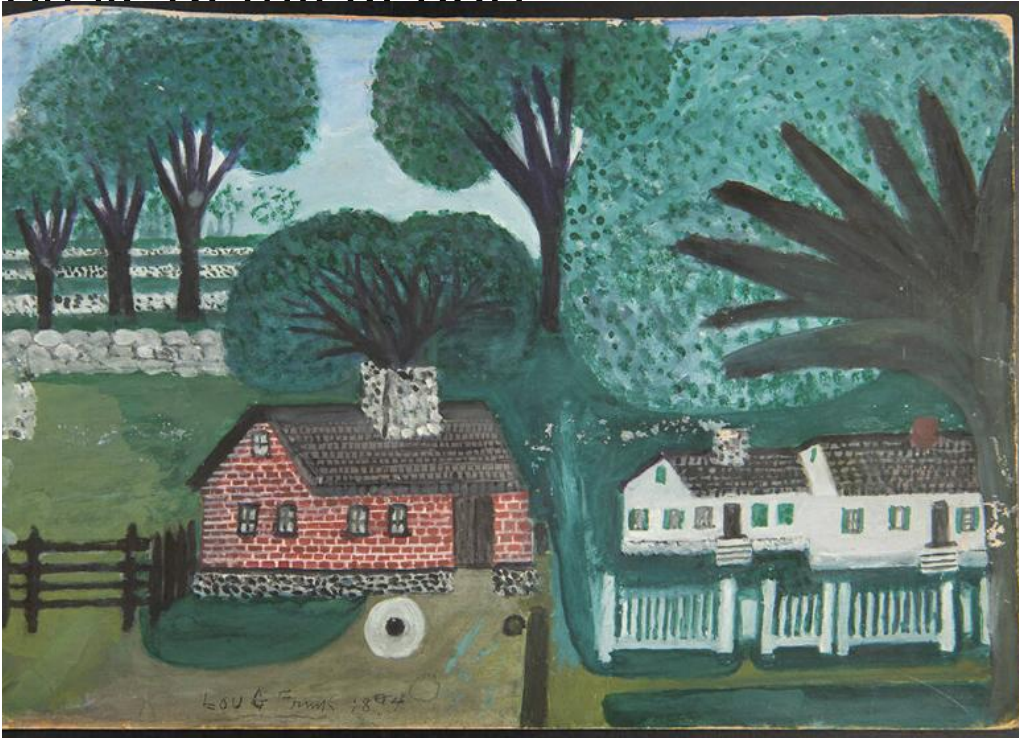


Basic Detail Report



Title Rufus Rood's Blacksmith Shop and Shop Walls

Primary Maker Louis Grosvernor Frink

Medium Drawing; pencil, watercolor, and gouache on brown paper on cardboard

Description The drawing depicts Rufus Rood's blacksmith shop, identifiable by its sturdy red-brick structure, wooden side doors, and central chimney built of stone. The shop is enclosed by a black picket fence, and behind it stretches several rows of stone walls bordered by dense, verdant trees. To the right stand two smaller white houses with green-shuttered windows and dark roofs, one featuring a central stone chimney, the other a central red-brick chimney. These houses are surrounded by a white picket fence, set within a lush, green landscape. On verso, there's a depiction of a white picket fence and the rear facades of the two white houses.

Basic Detail Report

Dimensions Primary Dimensions (image height x width): 15 3/4 x 20in. (40 x 50.8

cm) Sheet (height x width): 15 3/4 x 20in. (40 x 50.8cm) Mount (height x width): 15

3/4 x 20in. (40 x 50.8cm)