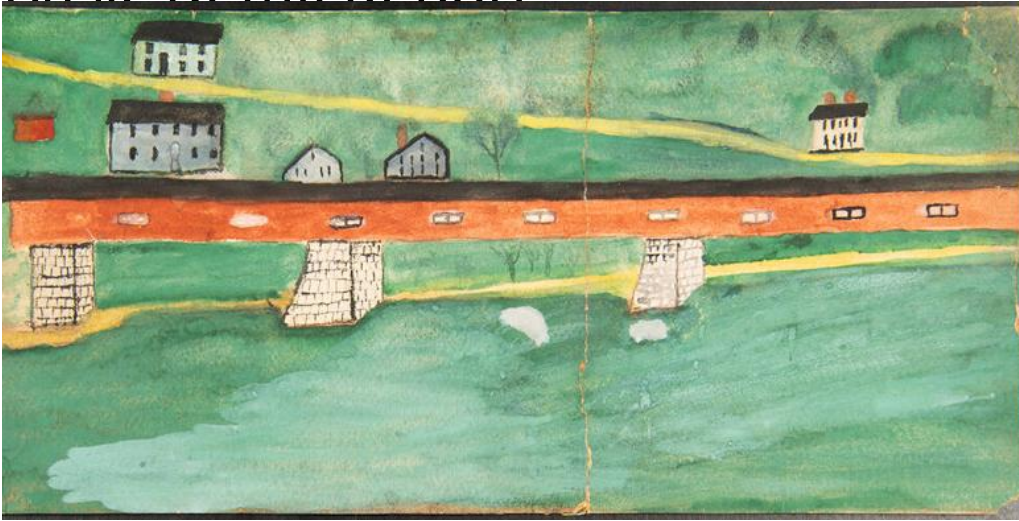


# Basic Detail Report



## Title Red Covered Bridge

Primary Maker Louis Grosvernor Frink

Medium Drawing; pencil, watercolor, and gouache on brown paper on cardboard

Description Aerial view of a very long red covered bridge with window-like openings along the facades and three large supporting stone piers. The bridge is above a stream and surrounded by a green rural landscape and a few houses in the background.

Dimensions Primary Dimensions (image height x width): 15 3/4 x 20in. (40 x 50.8 cm) Sheet (height x width): 15 3/4 x 20in. (40 x 50.8cm) Mount (height x width): 15 3/4 x 20in. (40 x 50.8cm)