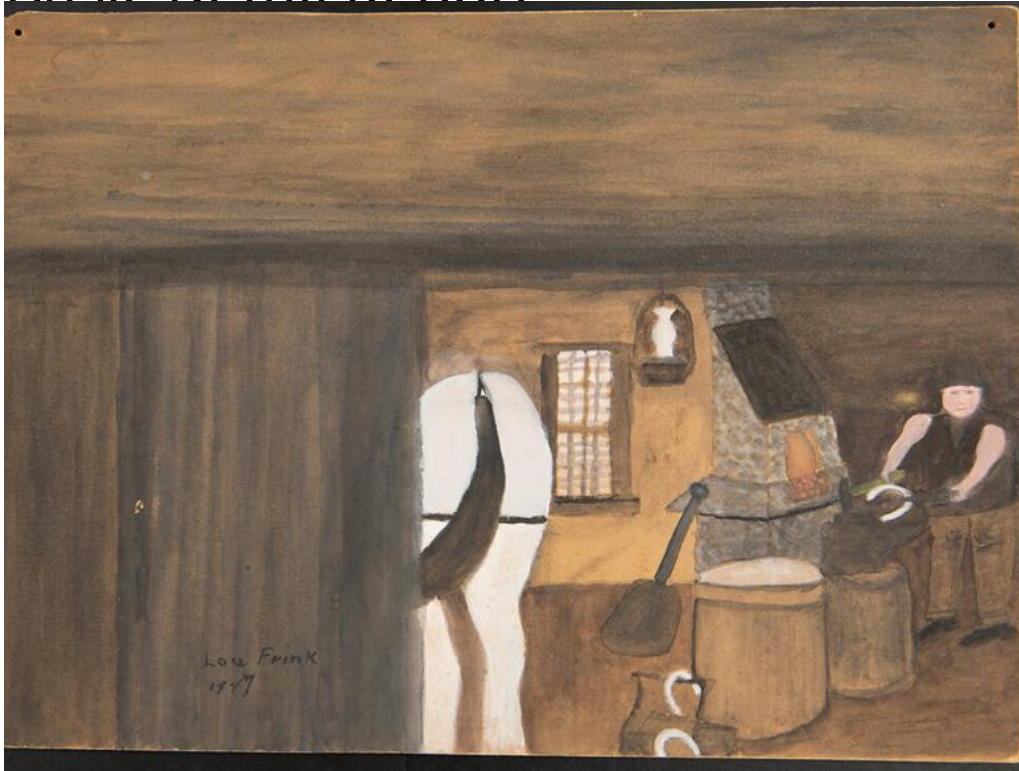


# Basic Detail Report



## Title Smithy

Date 1947

Primary Maker Louis Grosvernor Frink

Medium Drawing; pencil, watercolor, and gouache on brown paper on cardboard

Description The drawing depicts the interior of the blacksmith shop from the entrance with a wooden door. Inside is the behind of a white hore with a black tail. A narrow vertical window to the right of a blacksmith forging a horseshoe (for the white horse) in front of a lit stone furnace. The blacksmith, wearing a black hat, short, black vest, and tan trousers, uses the iron tongs to transfer the horseshoe from the furnace to the anvil. Around him are a shovel and two barrels.

# Basic Detail Report

Dimensions Primary Dimensions (image height x width): 15 3/4 x 20in. (40 x 50.8

cm) Sheet (height x width): 15 3/4 x 20in. (40 x 50.8cm) Mount (height x width): 15

3/4 x 20in. (40 x 50.8cm)