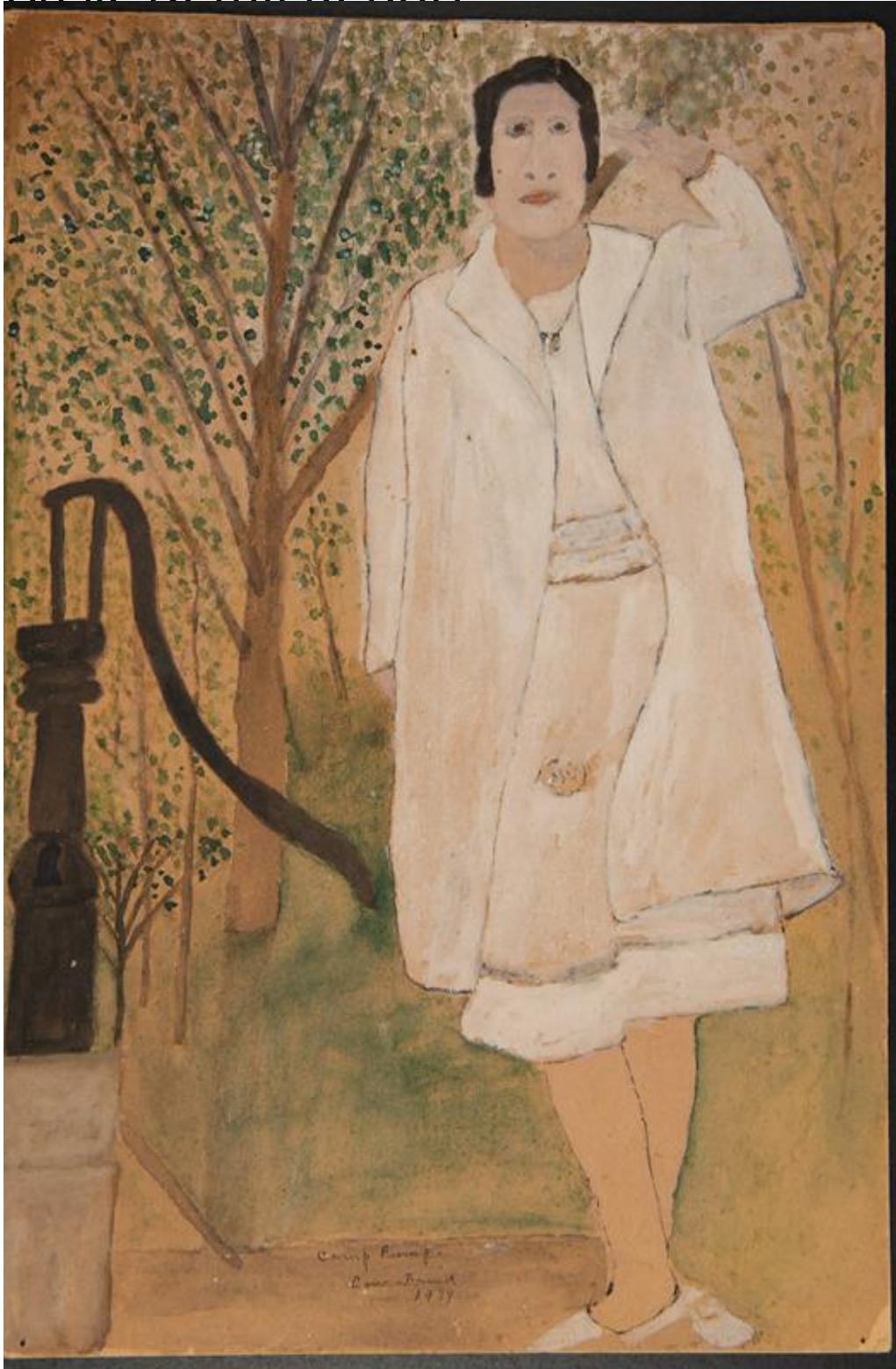


Basic Detail Report



Title Camp Pump.

Date 1934

Primary Maker Louis Grosvernor Frink

Basic Detail Report

Medium Drawing; pencil, watercolor, and gouache on brown paper on cardboard

Description Drawing depicting a woman with short, dark hair who stands prominently in the center. She wears a chic white, knee-length dress under a long, loose-fitting white coat, and a necklace. Her expression is stoic and direct, with simplified features. The woman stands next to a cast-iron hand water pump mounted on a stone base. The landscape in the background is filled with slender lush trees.

Dimensions Primary Dimensions (image height x width): 15 3/4 x 20in. (40 x 50.8 cm) Sheet (height x width): 15 3/4 x 20in. (40 x 50.8cm) Mount (height x width): 15 3/4 x 20in. (40 x 50.8cm)