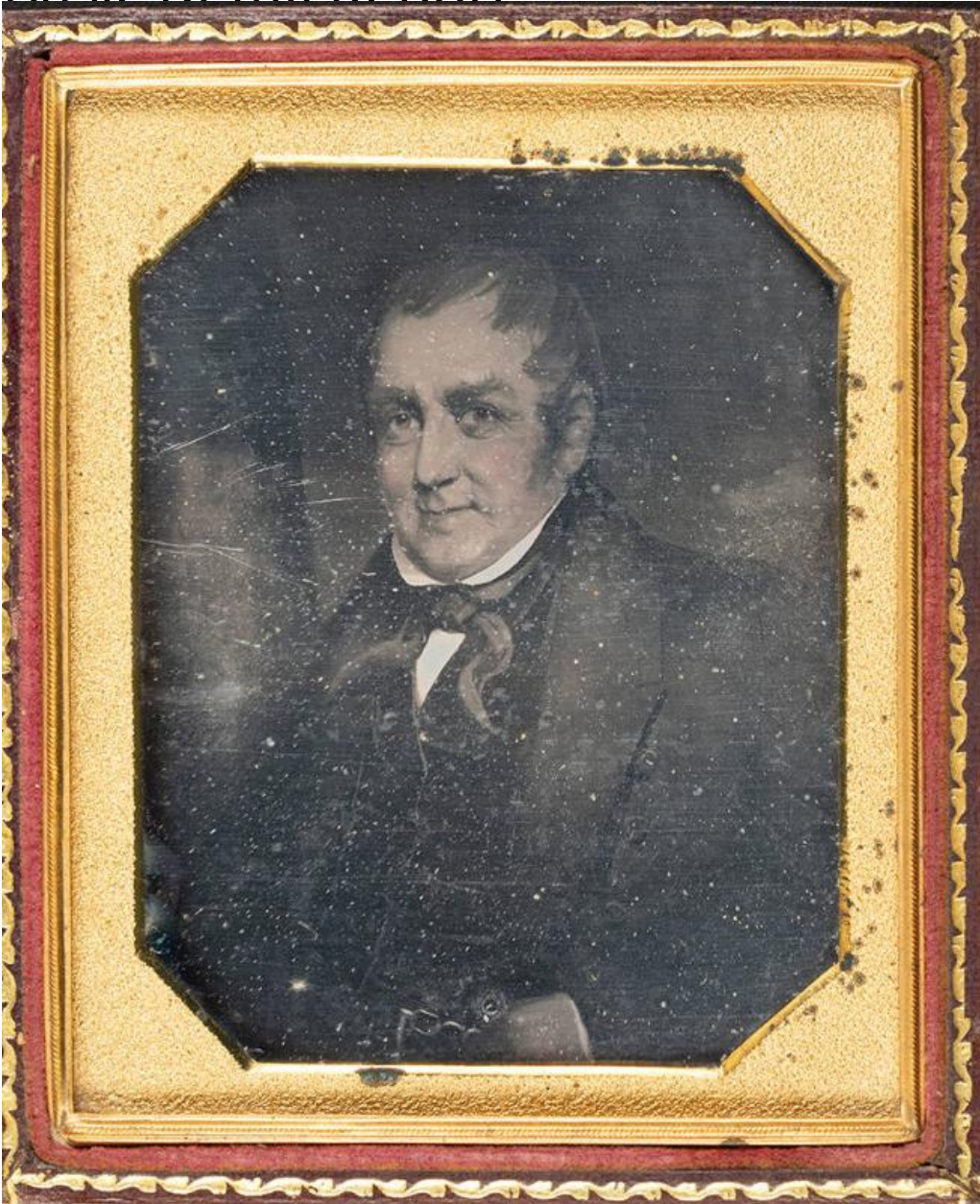


# Basic Detail Report



**Title** Captain Oliver Filley

Date about 1850

Primary Maker Oliver Filley

Medium Daguerreotype; silver-coated copper plate in brass window mat

package in tooled leather-covered wooden case. Embossed red velvet pad in left side of open case

# Basic Detail Report

Description Quarter plate daguerreotype of a painting of Oliver Filley. Filley is

painted in late middle age. He is wearing a jacket, vest, white shirt with an

upturned collar, and what appears to be a cravat. His hair is combed forward

into points on his forehead and around his temples.

Dimensions Plate (image plate height x width):  $4 \times 3 \frac{1}{4}$ in. ( $10.2 \times 8.3$ cm) Other

(case height x width x depth):  $4 \frac{1}{2} \times 3 \frac{3}{4} \times \frac{1}{2}$ in. ( $11.4 \times 9.5 \times 1.3$ cm)