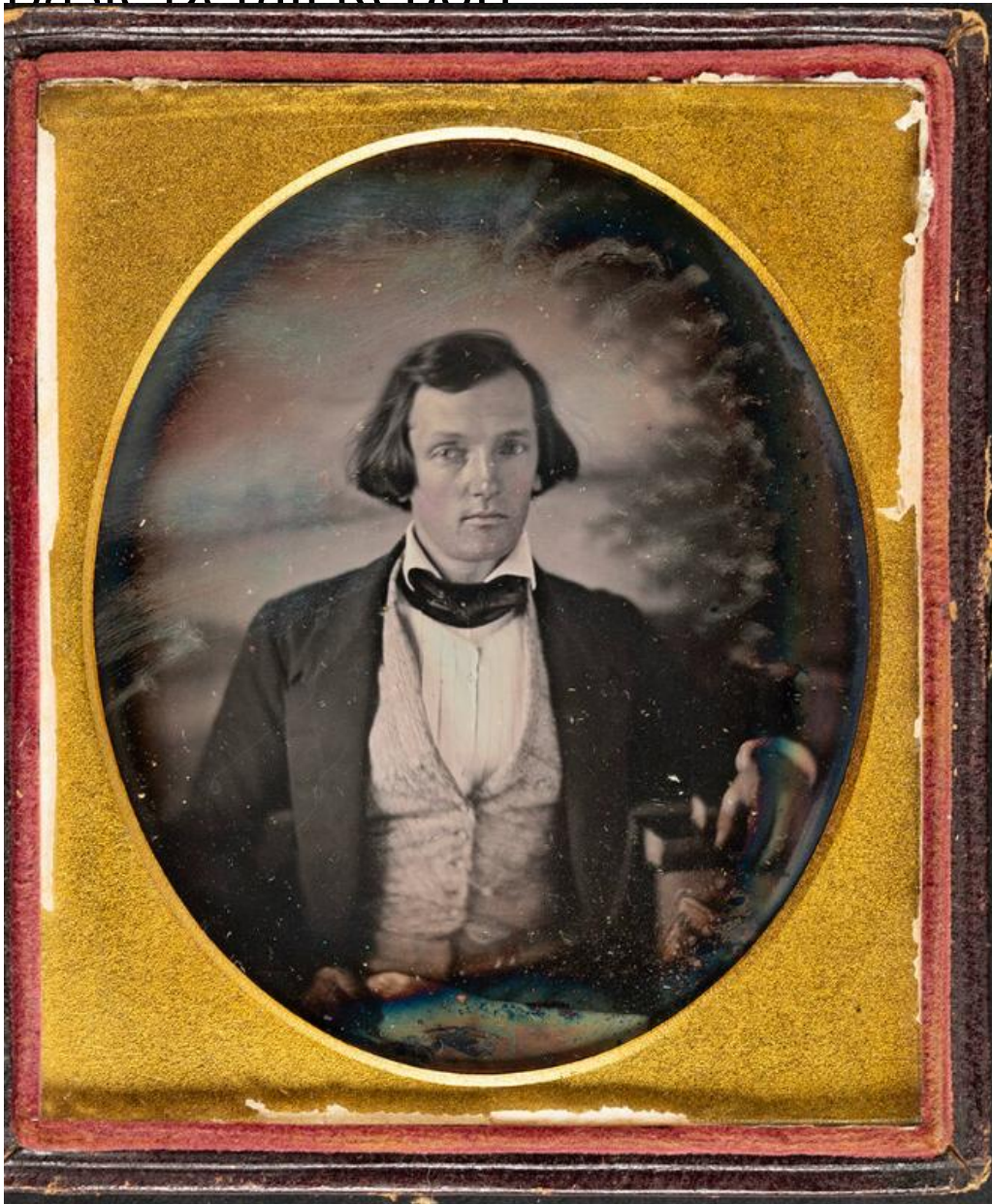


Basic Detail Report



Title Thomas Mills Day

Date about 1840

Primary Maker Thomas Mills Day

Medium Daguerreotype; silver-coated copper plate in brass window mat

package (missing the preserver) in tooled leather-covered wooden case; red silk

pad in left side of open case

Basic Detail Report

Description Sixth plate daguerreotype of Thomas Mills Day, taken when Day was in his early twenties. He is wearing a dark jacket, light-colored vest, white shirt, and a dark bow tie. His hair worn long, covering his ears, and is parted to one side.

Dimensions Plate (image plate height x width): $3 \frac{1}{4} \times 2 \frac{3}{4}$ in. (8.3 × 7cm)

Other (case height x width x depth): $3 \frac{1}{2} \times 3 \frac{1}{8} \times \frac{1}{2}$ in. (8.9 × 7.9 × 1.3cm)