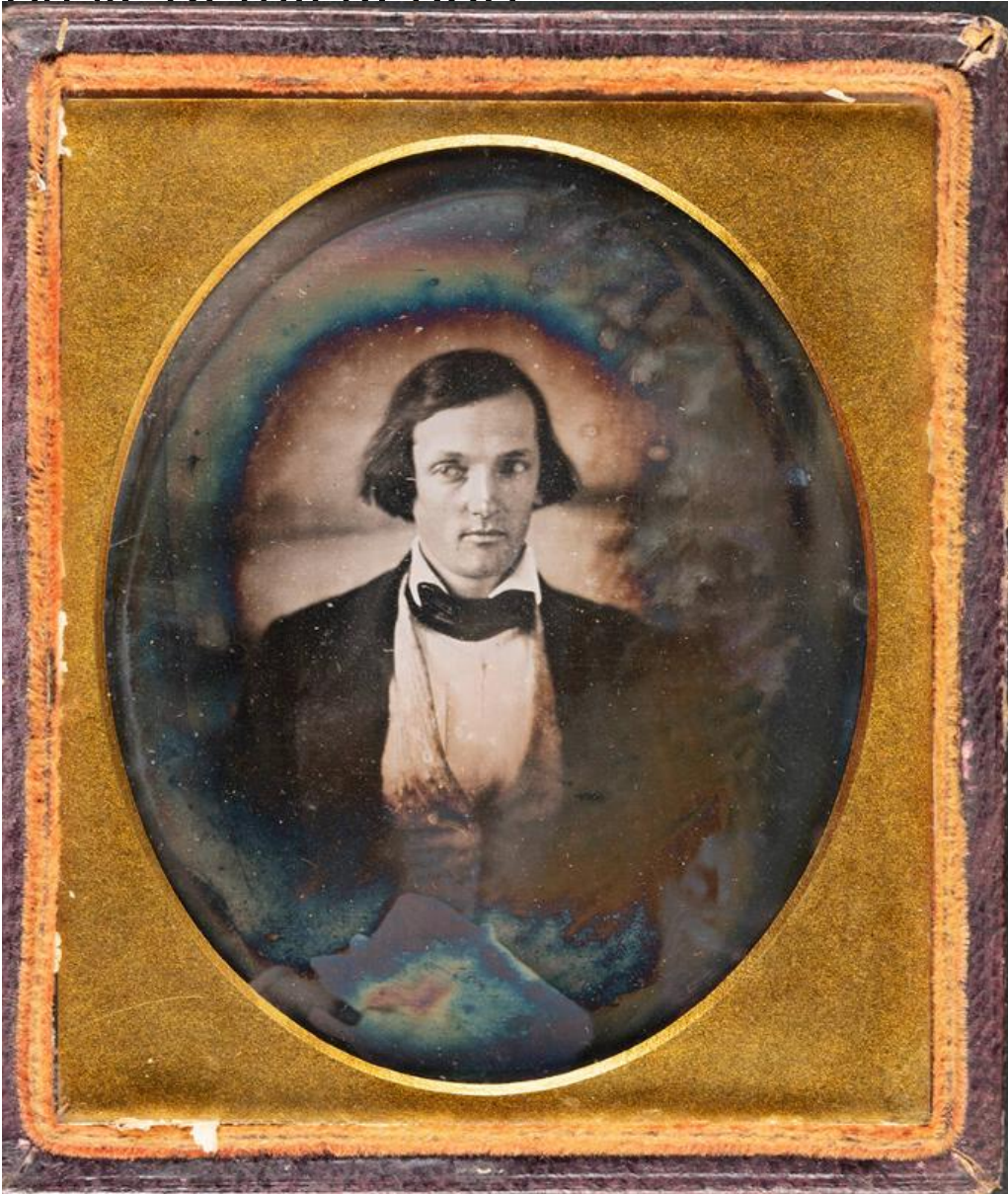


Basic Detail Report



Title Thomas Mills Day

Date about 1840

Primary Maker Thomas Mills Day

Medium Daguerreotype; silver-coated copper plate in brass window mat package (missing the preserver) in tooled leather-covered wooden case; red silk pad in left side of open case

Description Sixth plate daguerreotype of Thomas Mills Day, taken when Day was in his early twenties. He is wearing a dark jacket, light-colored vest, white shirt,

Basic Detail Report

and a dark bow tie. His hair worn long, covering his ears, and is parted to one side.

Dimensions Plate (image plate height x width): $3 \frac{1}{4} \times 2 \frac{3}{4}$ in. (8.3 × 7cm)

Other (case height x width x depth): $3 \frac{5}{8} \times 3 \frac{3}{16} \times \frac{1}{2}$ in. (9.2 × 8.1 × 1.3cm)