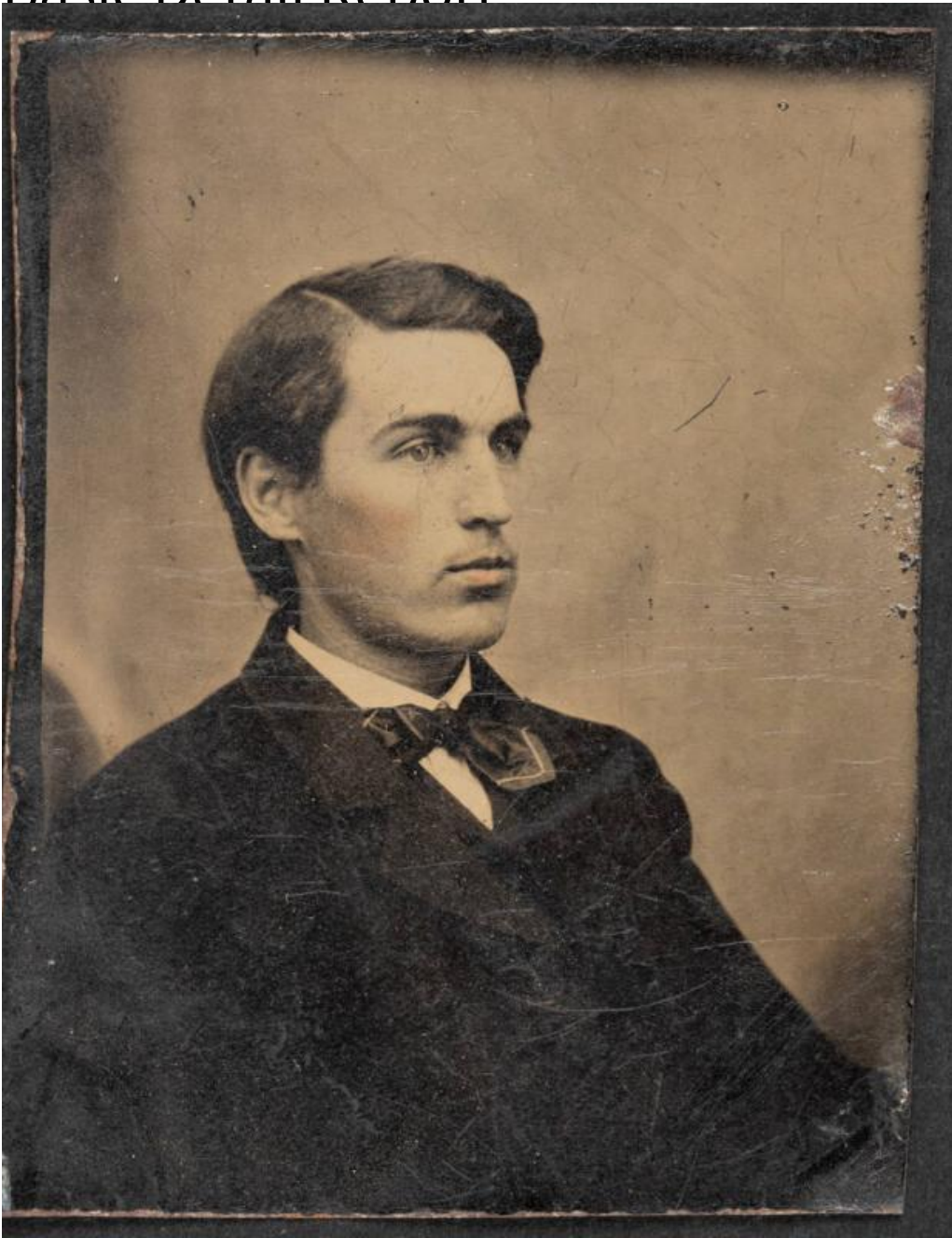


# Basic Detail Report



**Title** Myron Chaffee

Date about 1863-1864

Primary Maker Myron J. Chaffee

Medium (a) Photography; tintype, japanned iron (b) leather covered wood (c)

leather covered wood, velvet

# Basic Detail Report

Description (a) Tintype and (b-c) broken case. Black and white bust-length

portrait of Myron J. Chaffee with pink hand tinting on his cheeks. Chaffee has

dark hair and a mustache. He is dressed in a dark suit, vest, and bowtie.

Dimensions Primary Dimensions (Tintype; length x width):  $2 \frac{1}{8} \times 1 \frac{5}{8}$ in. (5.4

$\times 4.1$ cm) Primary Dimensions (Case bottom; length x width x height ):  $3 \frac{1}{16} \times$

$2 \frac{1}{2} \times \frac{3}{16}$ in. ( $7.8 \times 6.4 \times 0.5$ cm) Primary Dimensions (Case top; length x

width x height):  $2 \frac{3}{4} \times 2 \frac{5}{16} \times \frac{1}{4}$ in. ( $7 \times 5.9 \times 0.6$ cm)