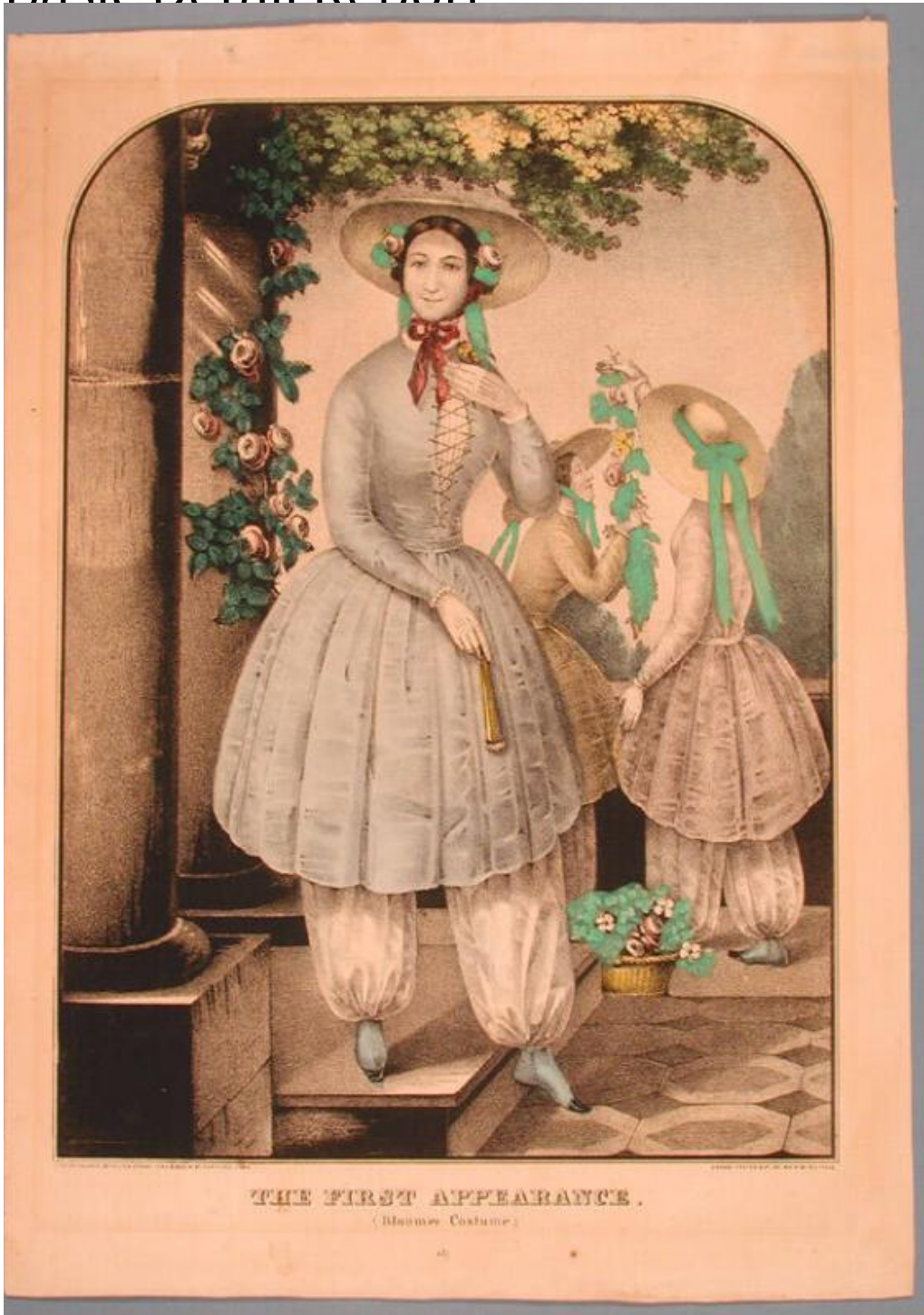


Basic Detail Report



Title The First Appearance.

Date 1850-1851

Primary Maker Elijah Chapman Kellogg

Medium Lithography; printer's ink and watercolor on wove paper

Basic Detail Report

Description Full-length portrait of a woman standing on a porch or terrace. She wears a short dress over bloomers and shoes with patent leather toe caps. The bodice is cross-laced over a blouse. The bloomers are gathered at the ankle. She wears a broad-brimmed straw hat with broad ribbons and two roses tucked beneath the brim. She is wearing gloves and holds a fan in her right hand. She descends from a step onto a tiled pavement. Two additional women dressed in similar costumes stand behind her, holding a long garland of flowers. A basket of flowers is at their feet. Two columns are at the left. Roses appear to grow on one of the columns, and there are leaves overhead. Trees or bushes are in the right background.

Dimensions Primary Dimensions (image height x width): 11 13/16 x 8 5/8in. (30 x 21.9cm) Sheet (height x width): 14 3/16 x 10in. (36 x 25.4cm)