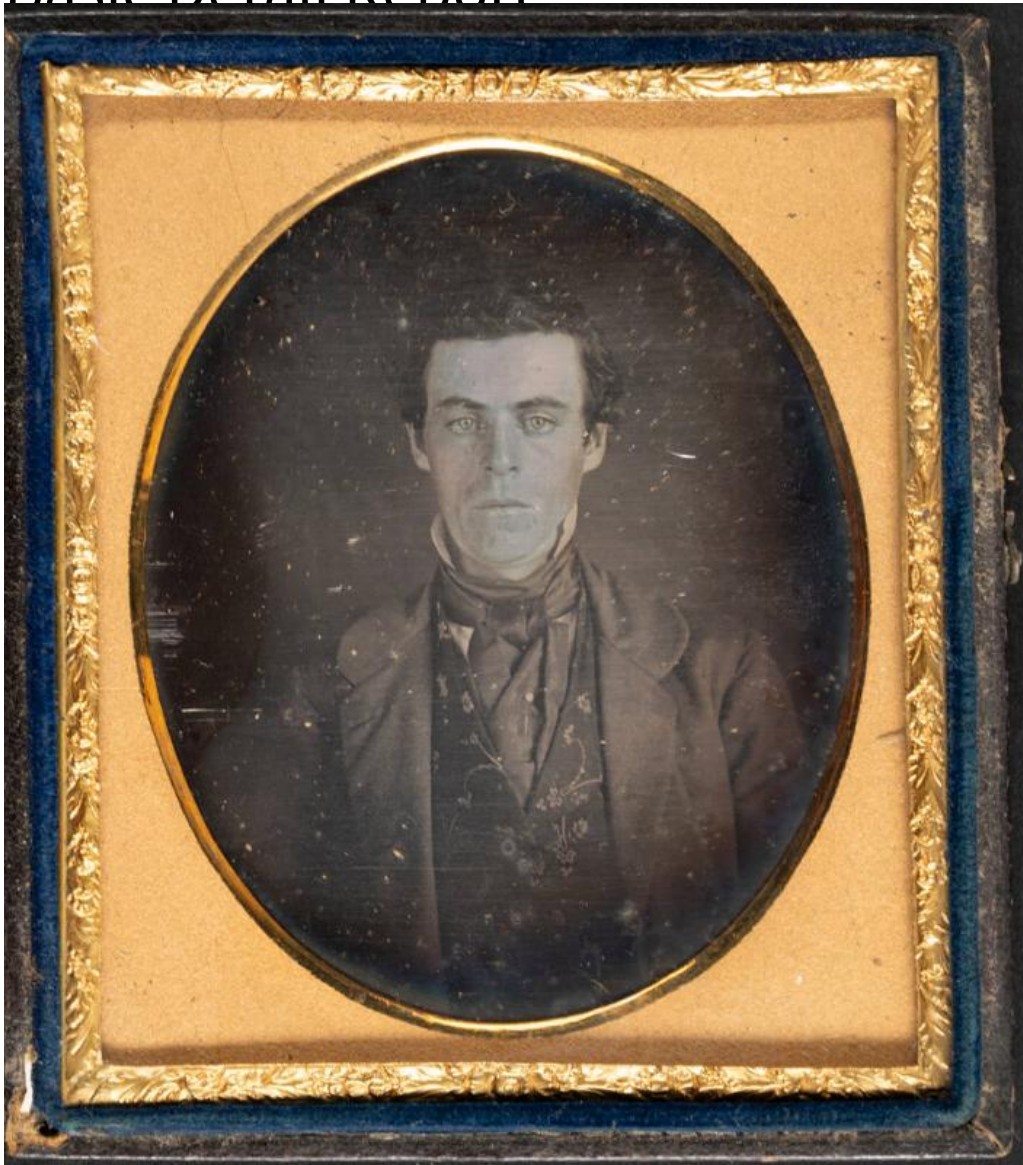


Basic Detail Report



Title Man in Case family

Date about 1855

Primary Maker Case family

Medium Daguerreotype; silver-coated copper plate in brass window mat package in tooled leather-covered wooden case. Red silk pad in open side of left case

Description Sixth-plate daguerreotype of a man in the Case family by an unknown photographer. There is a label under the image plate that identifies

Basic Detail Report

the man as Nathan Case, but Nathan Case was born in 1786 the man in this

daguerreotype is too young to have been born then. This man is probably in his

thirties (possibly his twenties). He is wearing a jacket, floral patterned vest, a

white shirt with an upturned collar, and a dark stock tie. His hair is short.

Dimensions Plate (height x width): $3 \frac{1}{4} \times 2 \frac{3}{4}$ in. (8.3×7 cm) Other (case

height x width x depth): $3 \frac{1}{2} \times 3 \frac{1}{8} \times \frac{3}{4}$ in. ($8.9 \times 7.9 \times 1.9$ cm)