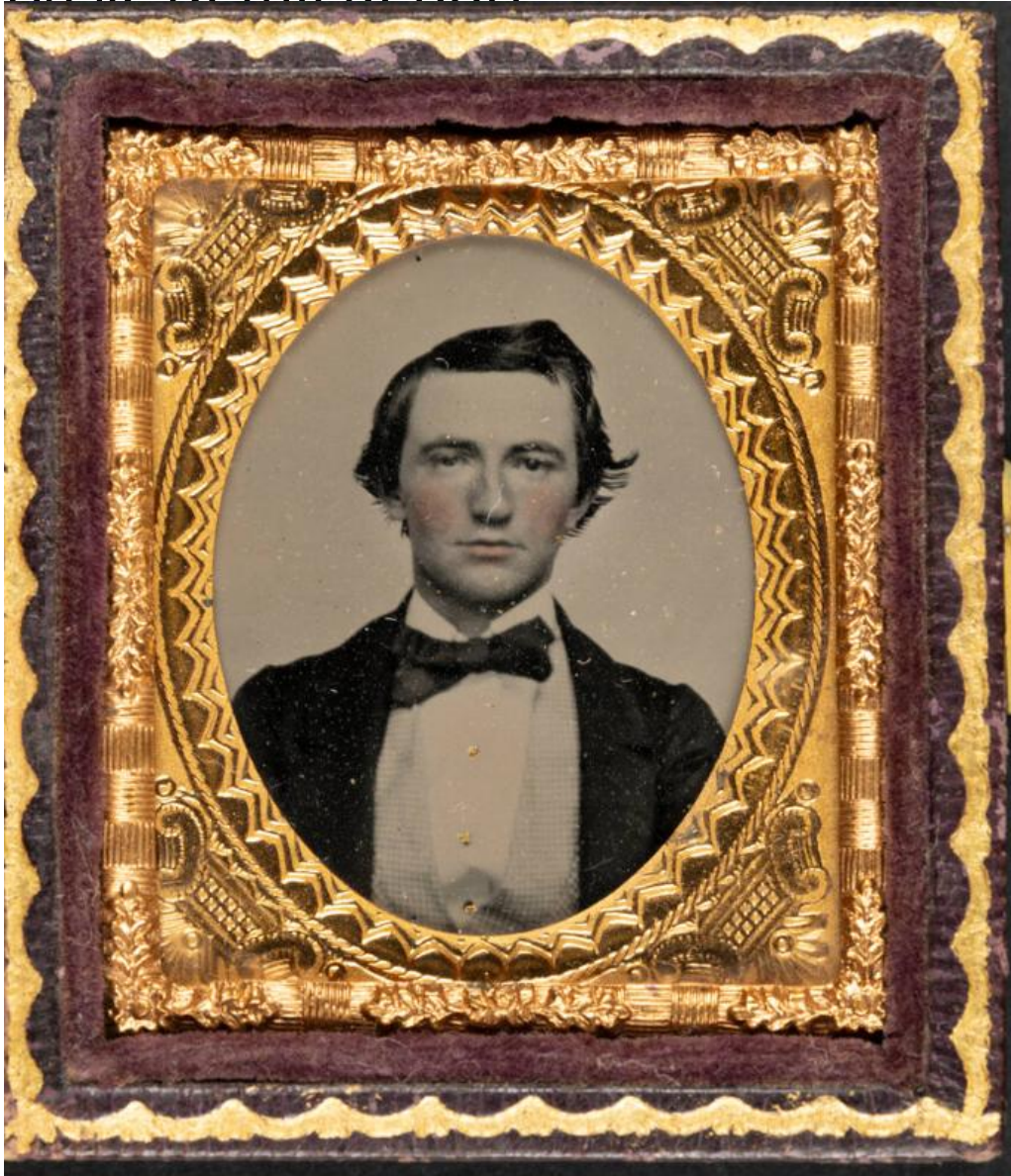


Basic Detail Report



Title Eustace Chester Chapman

Date about 1861

Primary Maker Eustace Chester Chapman

Medium Tintype; collodion on lacquered iron in brass window mat package in tooled leather-covered wooden case. Deep red embossed velvet pad in left side of open case

Description Sixteenth-plate tintype of Eustace Chester Chapman, taken by an unknown photographer when Chapman was probably in his very late teens or

Basic Detail Report

early- to mid-twenties. He is wearing a dark jacket, white shirt, and dark bow tie.

His hair is worn slightly long and parted on the side, with a wing of hair over his

left ear.

Dimensions Primary Dimensions (image package height x width): $1 \frac{5}{8} \times 1 \frac{3}{8}$

$\frac{7}{8}$ in. (4.1×3.5 cm) Other (case height x width x depth): $2 \times 1 \frac{3}{4} \times \frac{1}{2}$ in. ($5.1 \times$

4.4×1.3 cm)