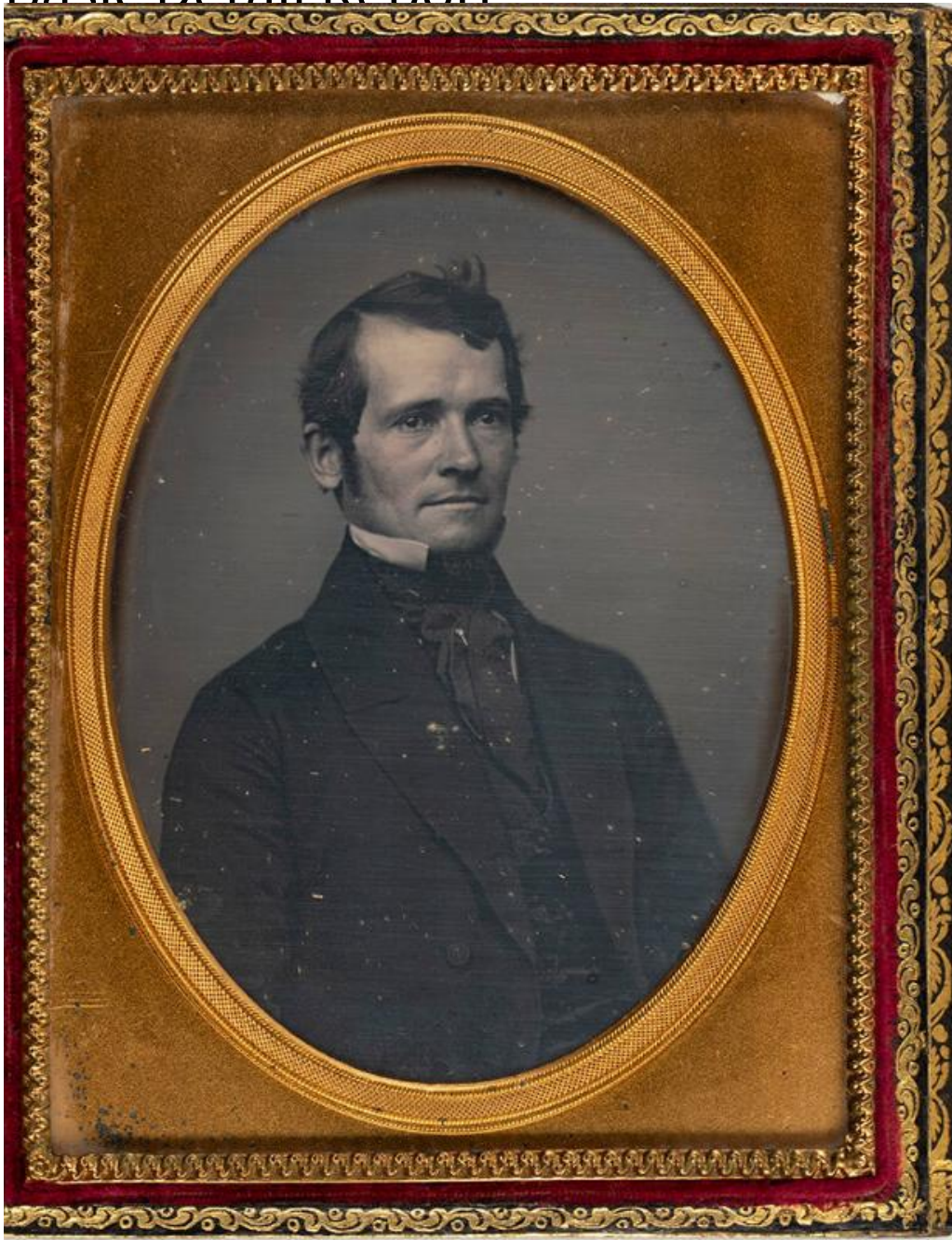


Basic Detail Report



Title Ebenezer Noble Kellogg and his wife, Lydia Billings Kellogg

Date about 1852

Primary Maker Ebenezer Noble Kellogg

Medium Daguerreotypes; silver-plated copper in brass window mat packages, in paper mache book-style case with mother-of-pearl and gilt decorations. Inner covers feature embossed red velvet pad.

Basic Detail Report

Description Two quarter-plate daguerreotypes in a book-style case, one of

Ebenezer Noble Kellogg, and the other of his wife, Lydia (Billings) Kellogg.

Probably taken when the Kelloggs were in the mid-30s, around 1852. Ebenezer

Kellogg is wearing a well-fitted, dark coat, a dark vest, and a dark necktie. His

white shirt is barely visible. His white collar is worn turned up, the points of

which are touching his chin. His hair is parted to one side, and he has sideburns.

Lydia Kellogg is wearing a dark dress with a deep v neckline and a chemisette

that is fastened at the hollow of her throat with a brooch. Her hair is parted in

the middle and fashioned into a wave over her ears in a way that makes her hair

looked bobbed. She is sitting in a chair with spindles and an upholstered back.

The case housing the daguerreotypes is quite ornate. The cover features mother-

of-pearl inlay around a hand-painted and -gilded scene of a building on the bank

of a body of water. On the leather-covered spine is the word "BIJOU." The two

daguerreotypes are set into a hinged box that, when the case is closed,

resembles the gilded pages of a book.

Dimensions Plate (height x width): $4 \frac{1}{4} \times 3 \frac{1}{4}$ in. (10.8×8.3 cm) Other (case

height x width x depth): $4 \frac{3}{4} \times 4 \times \frac{7}{8}$ in. ($12.1 \times 10.2 \times 2.2$ cm)