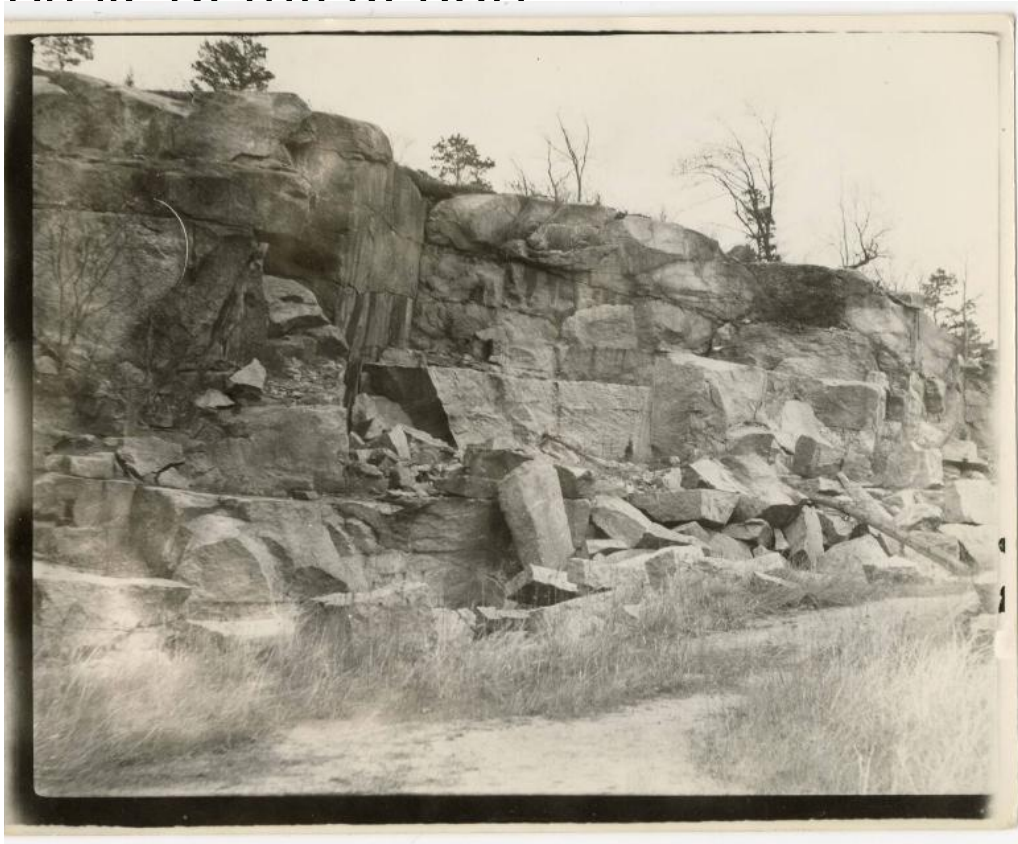


Basic Detail Renort



Title East Quarry

Date 1910

Medium Photography

Description Black and white photograph, view of the John Beattie Granite Works

East Quarry in 1910 just before the reactivation to get stone for the Kelsey Point

Breakwater. It had been unworked since the early 1890s.

Dimensions Primary Dimensions (overall height x width): $3 \frac{15}{16} \times 4 \frac{15}{16}$ in.

(10 × 12.6cm)