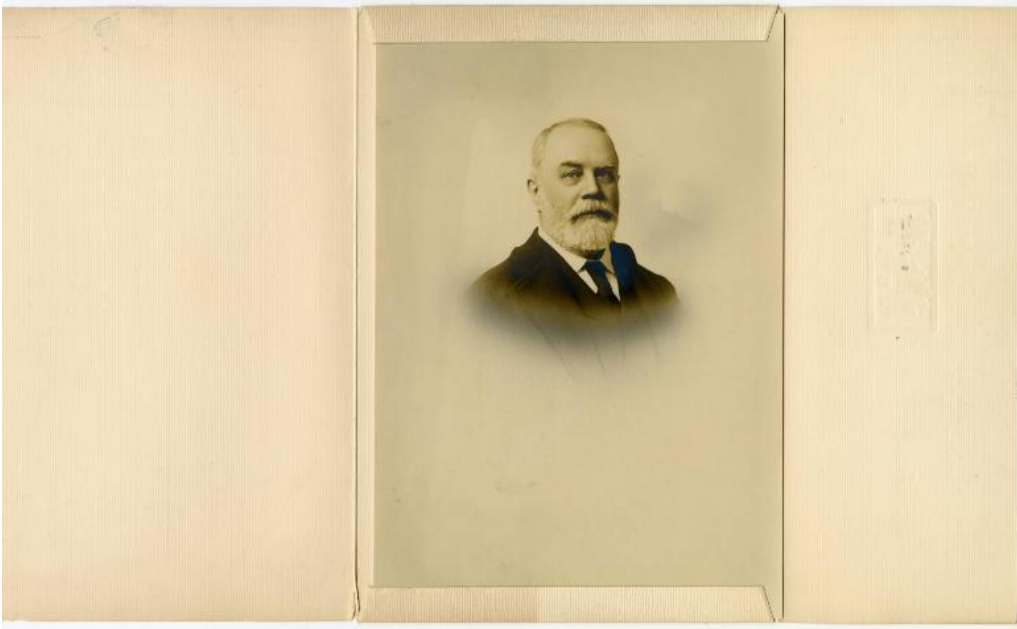


Basic Detail Report



Title James J. Goodwin

Date about 1909

Primary Maker James J. Goodwin

Description Black and white bust-length portrait (a) photograph mounted in a (b) tri-fold envelope of James J. Goodwin by Johnstone of Hartford. Goodwin is wearing a three-piece suit and tie. He has short gray hair and a gray beard and mustache.

Dimensions Primary Dimensions (Closed): $6 \frac{1}{2} \times \frac{1}{8} \times 9 \frac{1}{2}$ in. ($16.5 \times 0.3 \times 24.1$ cm) Primary Dimensions (Open): $16 \times \frac{1}{8} \times 9 \frac{1}{2}$ in. ($40.6 \times 0.3 \times 24.1$ cm)