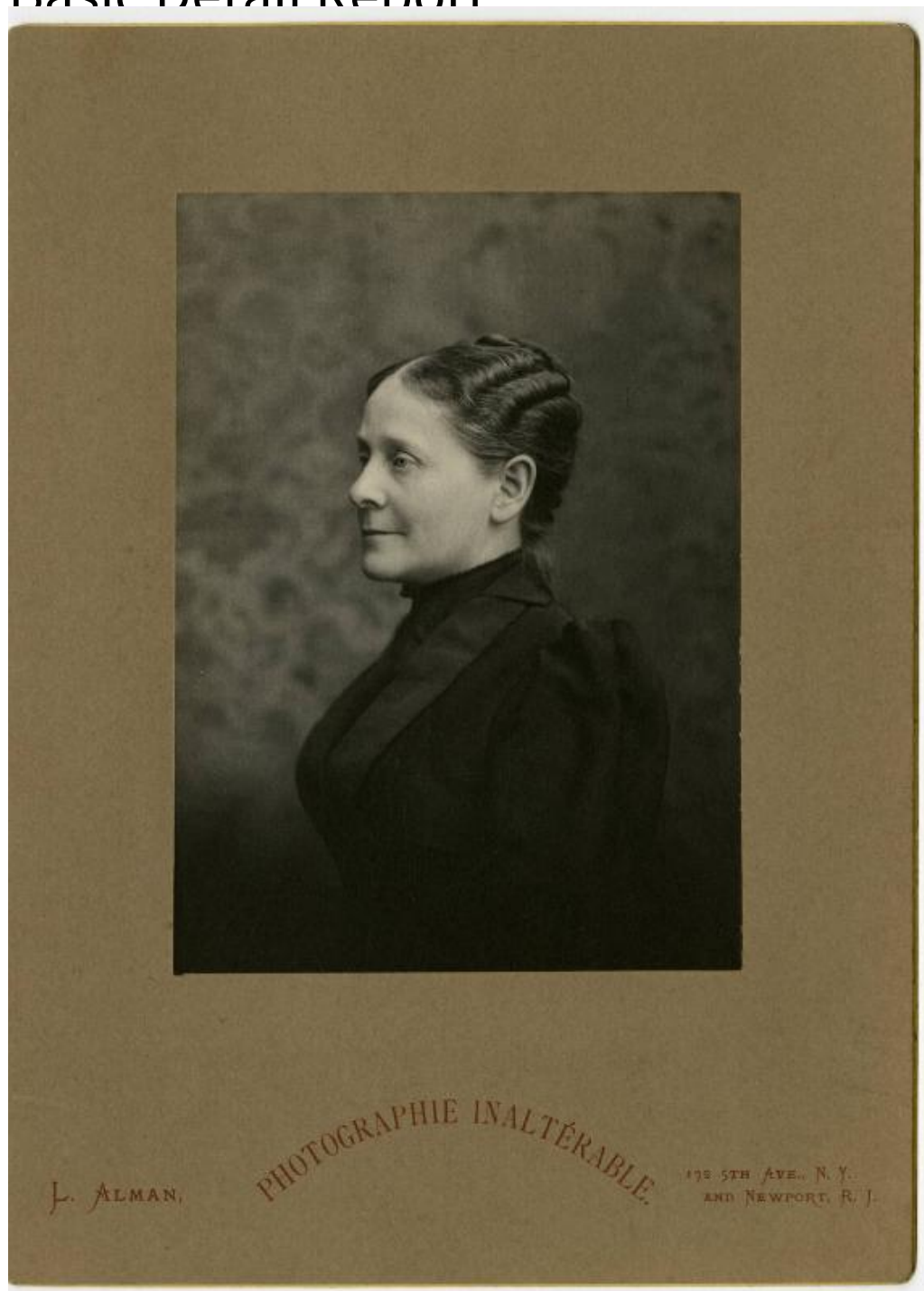


Basic Detail Report



Title A Goodwin

Date 1888

Basic Detail Report

Description Black and white mounted bust-length portrait photograph of an

unidentified woman, identified on the reverse as a Goodwin family member, by

L. Alman of New York City and Newport, Rhode Island. Goodwin is wearing a

dark dress with a high collar, and she is posed in profile.

Dimensions Primary Dimensions: $6 \frac{1}{2} \times \frac{1}{16} \times 9$ in. ($16.5 \times 0.2 \times 22.9$ cm)