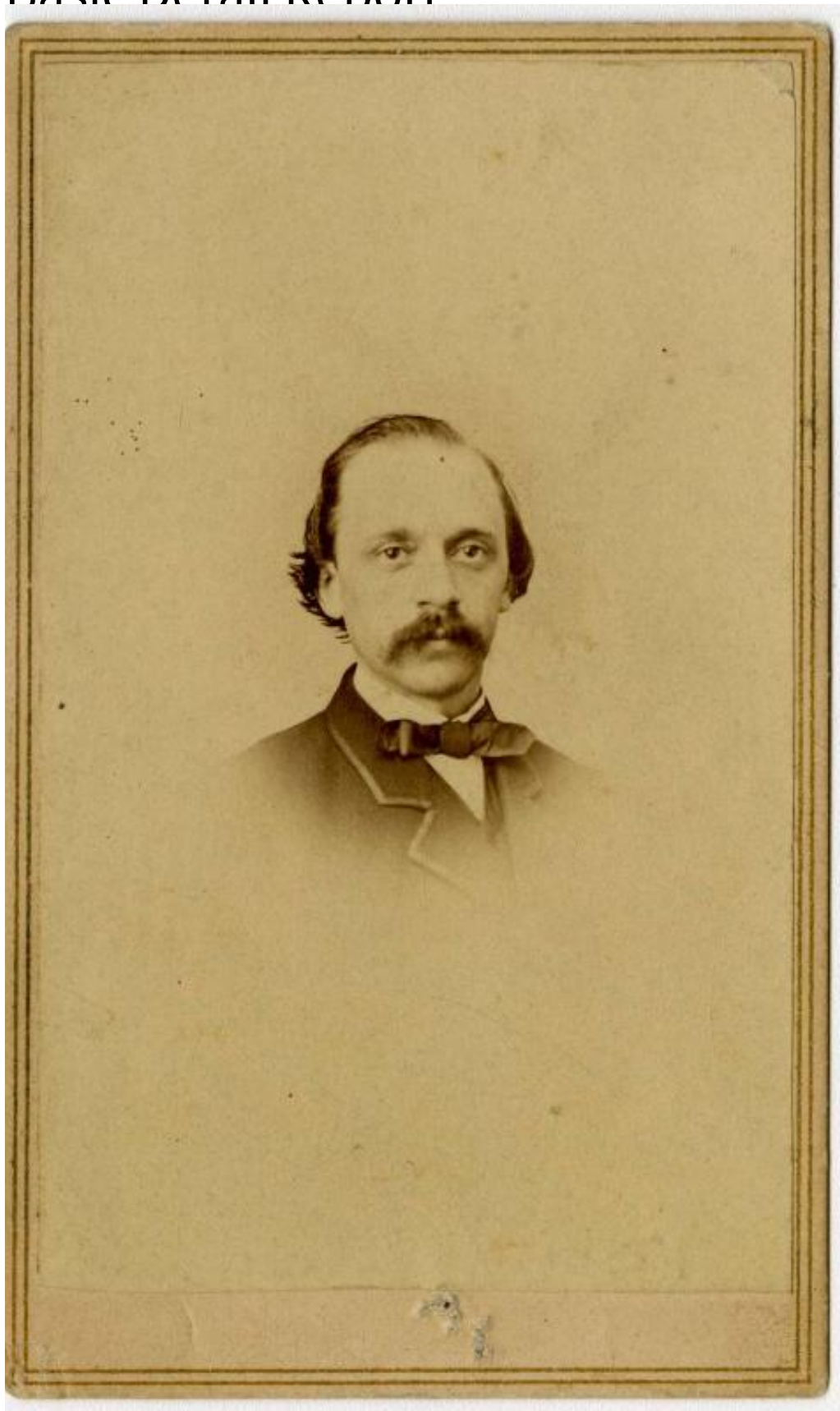


Basic Detail Report



Title Frank C. Buckland

Basic Detail Report

Primary Maker Kellogg Brothers

Description Carte de visite, bust-length portrait of Frank C. Buckland by the Kellogg Brothers of Hartford. Buckland has dark hair, a mustache, and is wearing a suit and bow-tie. The reverse features information about the Kellogg Brothers' studio and an illustration of an eagle holding a branch framed by thirteen stars.

Dimensions Primary Dimensions: $2\frac{3}{8} \times 4$ in. (6×10.2 cm)