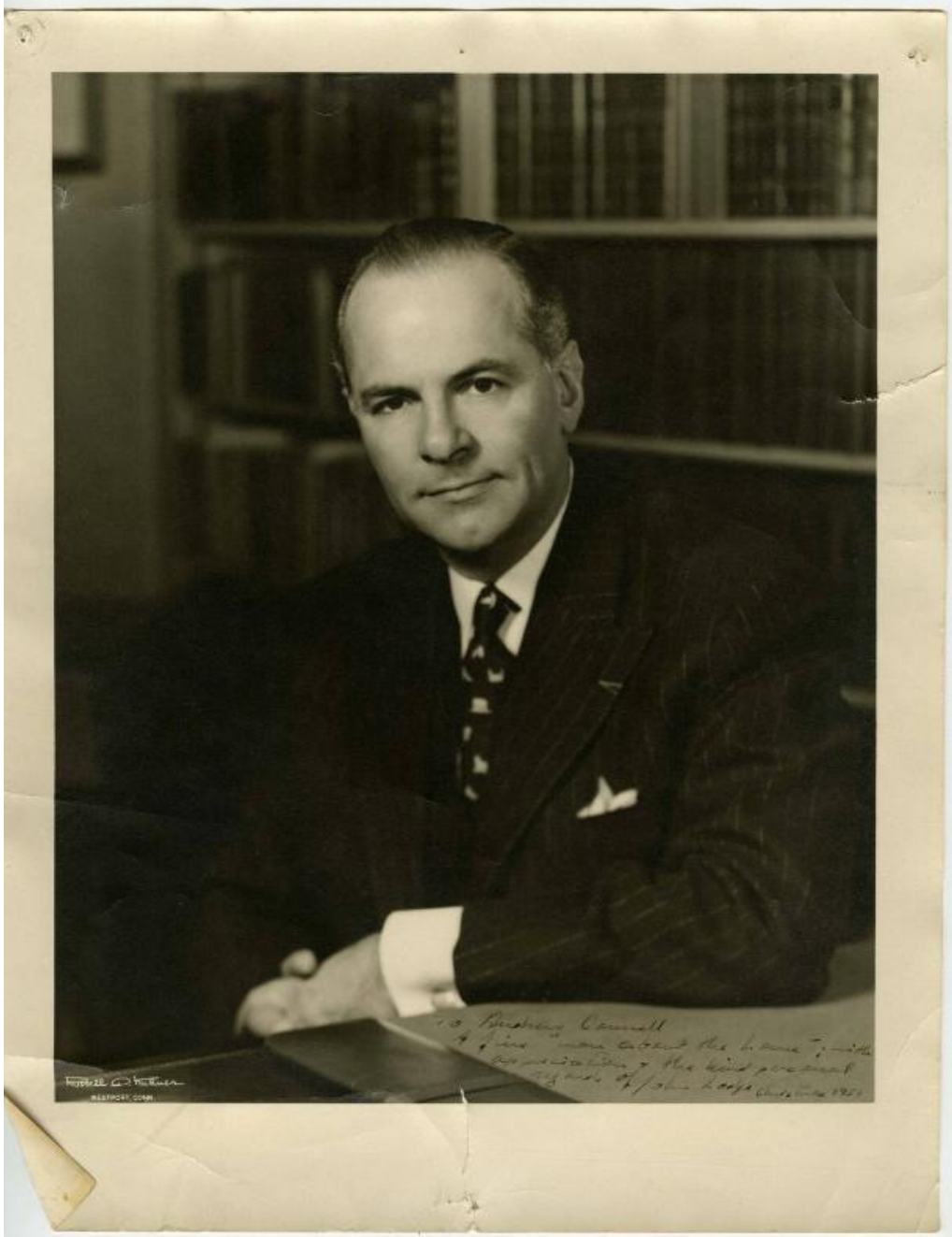


# Basic Detail Report



**Title** Gov. John Davis Lodge

**Date** 1951

**Primary Maker** John Davis Lodge

**Medium** Photography; silver gelatin print on paper

**Description** Black and white portrait of Governor John Davis Lodge with a handwritten note to Andrew Connell.

# Basic Detail Report

Dimensions Primary Dimensions:  $13 \frac{7}{8} \times 10 \frac{7}{8}$ in. ( $35.2 \times 27.6$ cm)