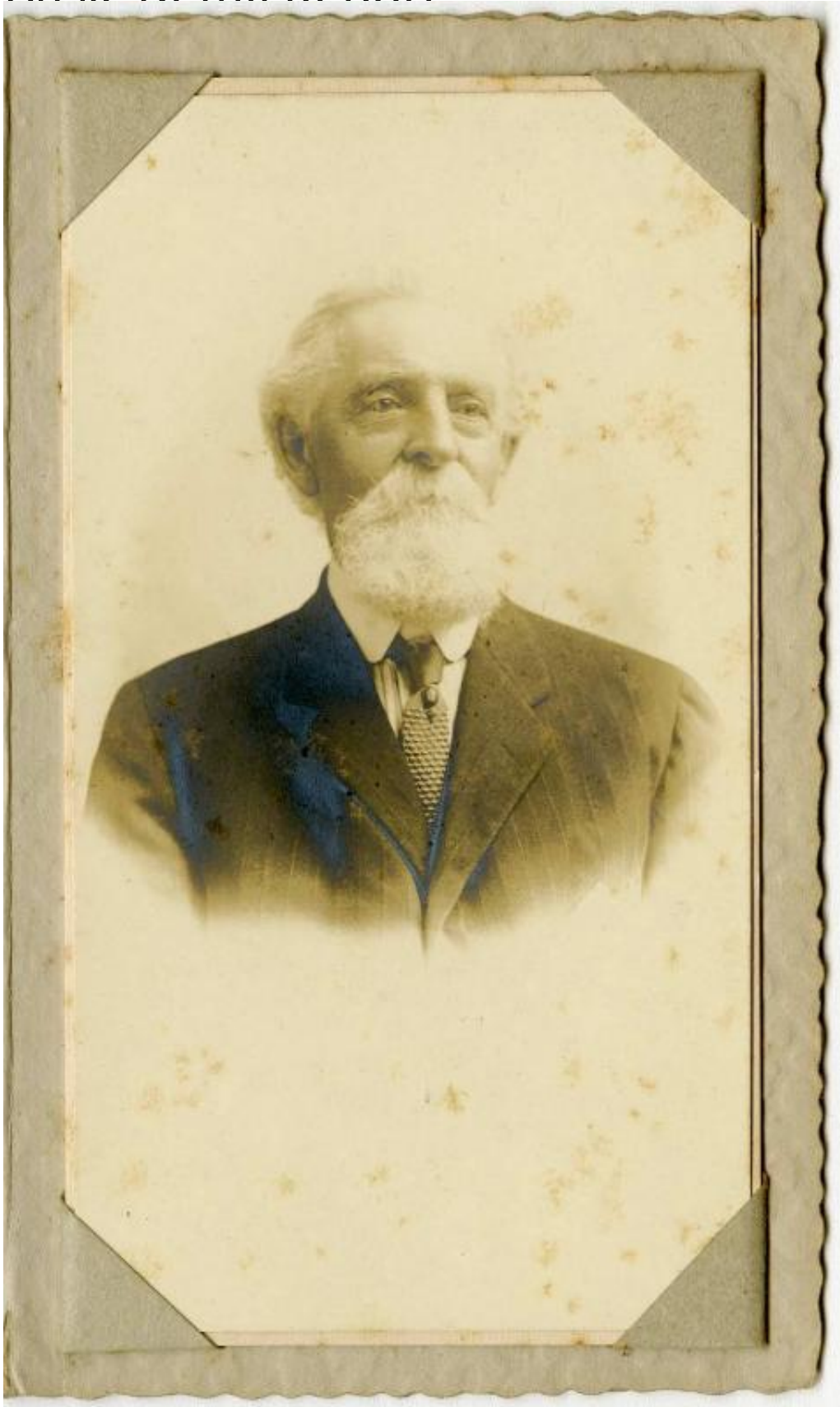


Basic Detail Report



Title Henry G. Jerome

Basic Detail Report

Date July 1916

Primary Maker George Henry Jerome

Medium Photography; albumen on paper on cardboard mount

Description Black and white upper-body portrait photograph of Henry G.

Jerome. The photo is mounted on a two-fold display card.

Dimensions Primary Dimensions (photo height x width): $4 \frac{5}{8} \times 2 \frac{1}{2}$ in. (11.7 ×

6.4cm) Other (overall height x width): $5 \frac{1}{4} \times 3 \frac{1}{8}$ in. (13.3 × 7.9cm) Other

(height x width of open case): $5 \frac{1}{4} \times 6 \frac{1}{8}$ in. (13.3 × 15.6cm)