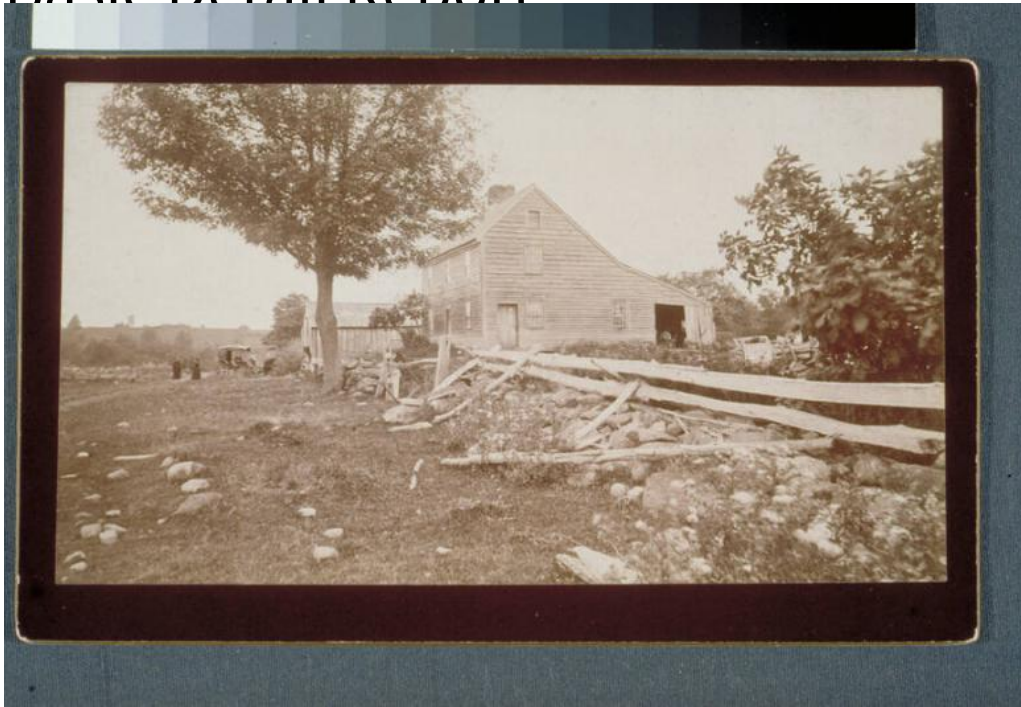


Basic Detail Report



Title John Browns birthplace, Torrington

Date 187-?

Medium Photography;

Description Frame center-chimney saltbox house. A grindstone is visible through the door of the rear saltbox section. A shrub, possibly a lilac bush, grows near the left corner. A vertical-boarded outbuilding, probably a barn, is in the background. Nearby, two women stand beside a horse-drawn carriage.

Wildflowers grow beside a dilapidated rail fence on a stone wall. Grass and rocks are at the left. Inscribed on back: "John Brown's Birthplace / Torrington, Conn."

Dimensions Primary Dimensions (overall height x width): $4 \frac{3}{4} \times 7 \frac{7}{8}$ in. (12 × 20cm)