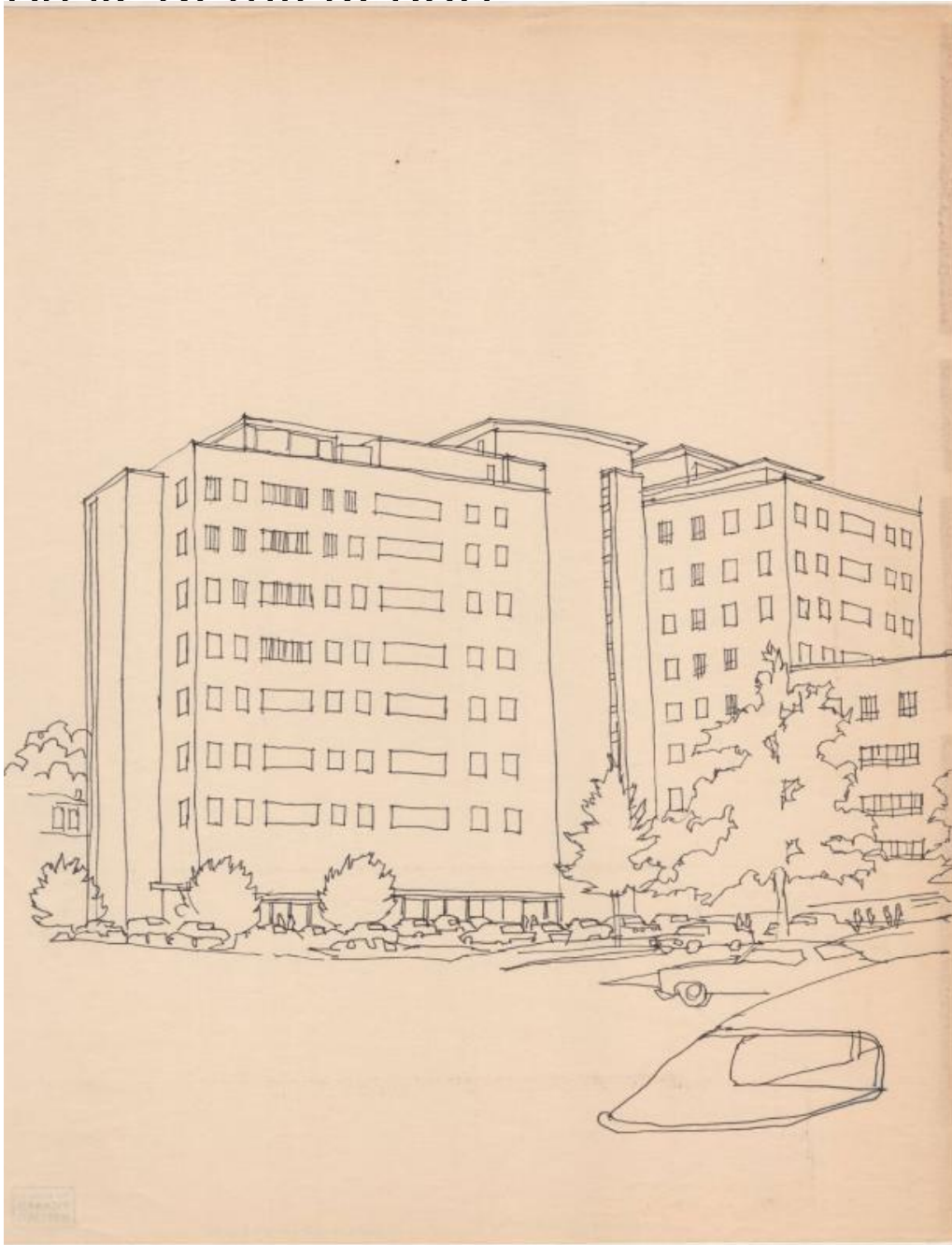


Basic Detail Report



Title Hartford Hospital, Hartford, Connecticut

Date 1970

Primary Maker Richard Welling

Medium Drawing; black marker on paper

Description Drawing of Hartford Hospital campus in Hartford, Connecticut, from a parking lot across from the main entrance. There are automobiles in the

Basic Detail Report

foreground, and another parking lot is visible on the right. Pedestrians are shown on the sidewalks around the buildings.

Dimensions Sheet (height x width): 17 7/8 x 37 3/4in. (45.4 x 95.9cm)