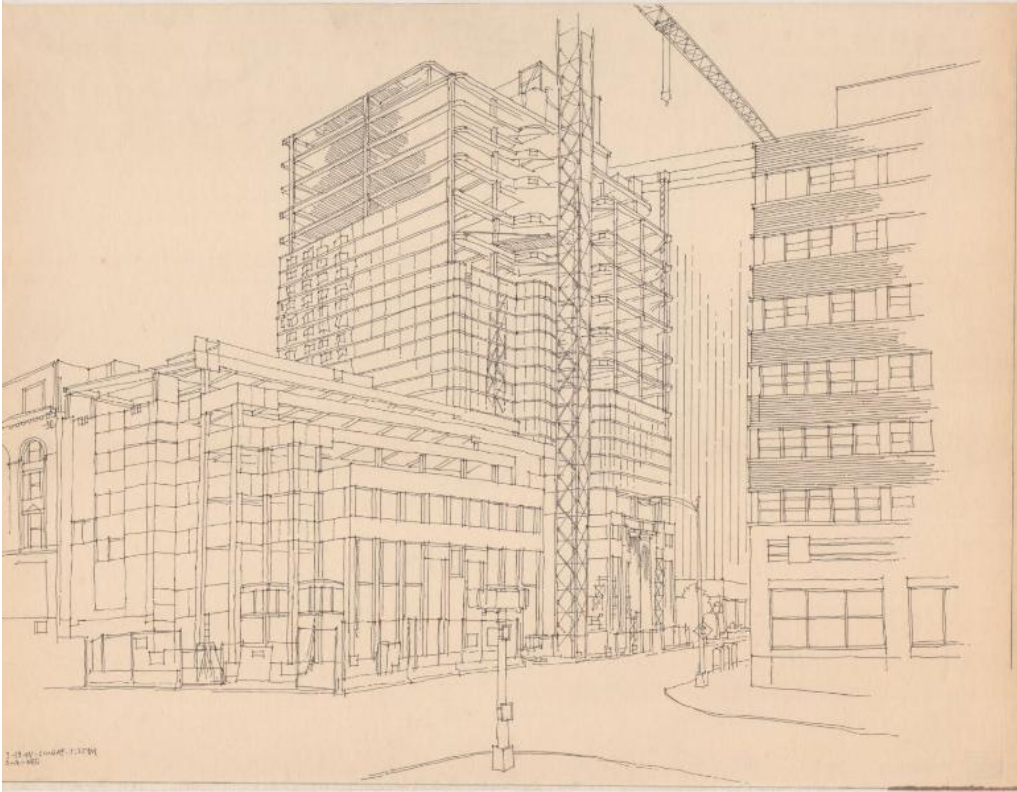


Basic Detail Report



Title Construction of 100 Pearl Street, Hartford, Connecticut

Date 1988

Primary Maker Richard Welling

Medium Drawing; black ink on paper

Description Drawing of the construction of 100 Pearl Street in downtown

Hartford, Connecticut, from the intersection of Pearl and Trumbull Streets. The

building is already partially constructed, with a tower crane at work on the remaining stories.

Dimensions Sheet (height x width): 18 x 24 1/8in. (45.7 x 61.3cm)