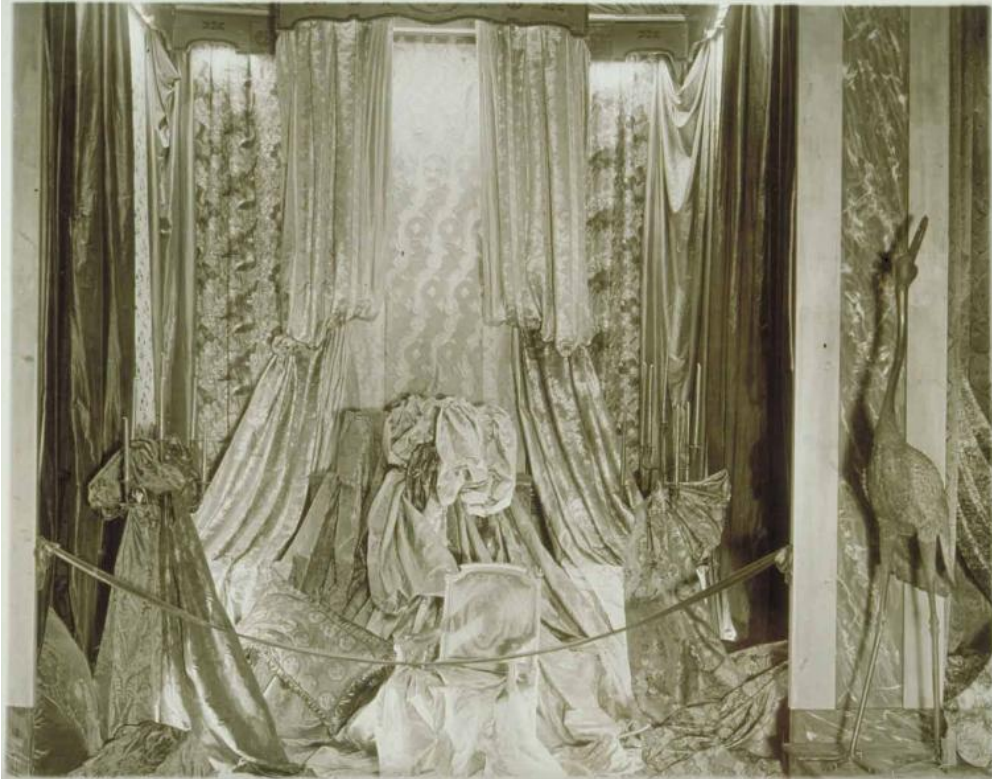


Basic Detail Report



Title Display of silk fabrics with a bronze crane, Manchester

Date about 1920

Primary Maker W. F. Miller & Co.

Medium Photography; gelatin silver print on paper

Description Display of patterned swags of material draped on and around the chairs, walls and floor in a cordoned-off alcove. A pillow is beside the chair. Two tall candelabras with candles are on either side. At the right is a cast sculpture, probably of bronze, of a bird, probably a crane.

Dimensions Primary Dimensions (overall height x width): 8 1/4 x 9 13/16in. (21 x 25cm)