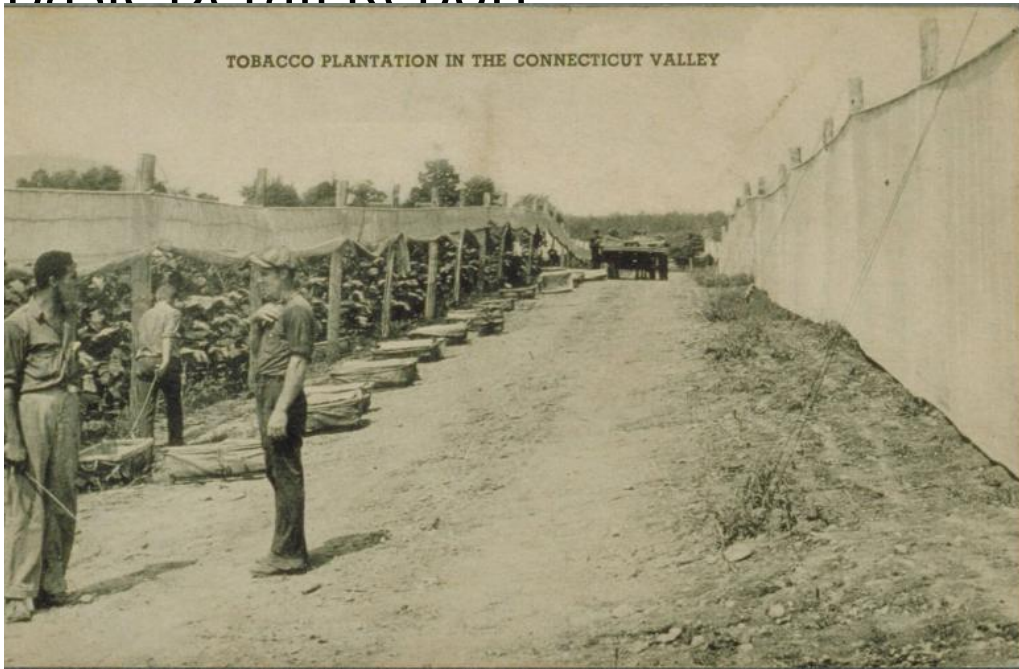


# Basic Detail Report



## Title Tobacco plantation in the Connecticut Valley

Date about 1945

Primary Maker The Collotype Co.

Medium Photomechanical reproduction; printer's ink on postcard

Description Three men, one wearing a beaked cap, stand in a dirt lane between two tobacco fields. The field on the right is entirely enclosed by tobacco netting.

The netting on the left has been rolled up, revealing rows of tobacco plants.

Canvas [?] containers line the lane and a vehicle, evidently horse-drawn, is in the background.

Dimensions Primary Dimensions (overall height x width): 3 9/16 x 5 1/2in. (9 x 14cm)