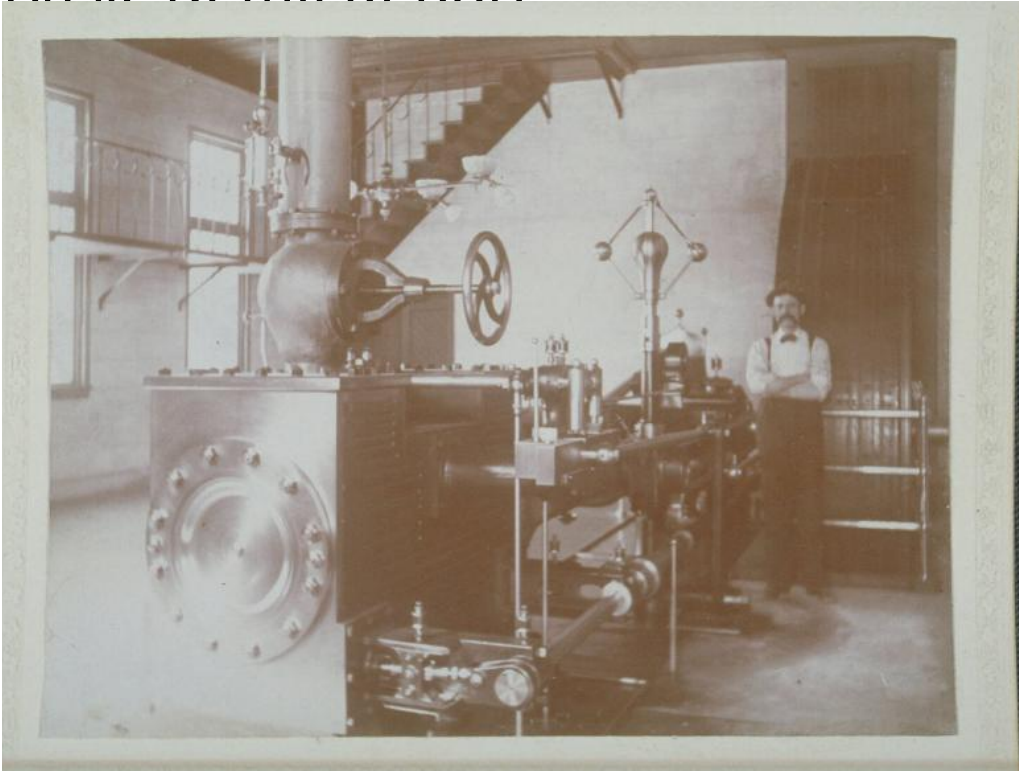


Basic Detail Report



Title Man and machine, Capewell Horse Nail Company, Cheshire

Date about 1880

Primary Maker Unknown

Medium Photography; albumen print on paper on cardboard mount

Description Interior of industrial factory building with two windows on left and staircase on back wall. Man in bowtie stands at right of square metal machine with shaft above, turnwheel and pipes around it. At right is tall pipe with balls on top.

Dimensions Primary Dimensions (overall height x width): 3 15/16 x 4 3/4in. (10 x 12cm)