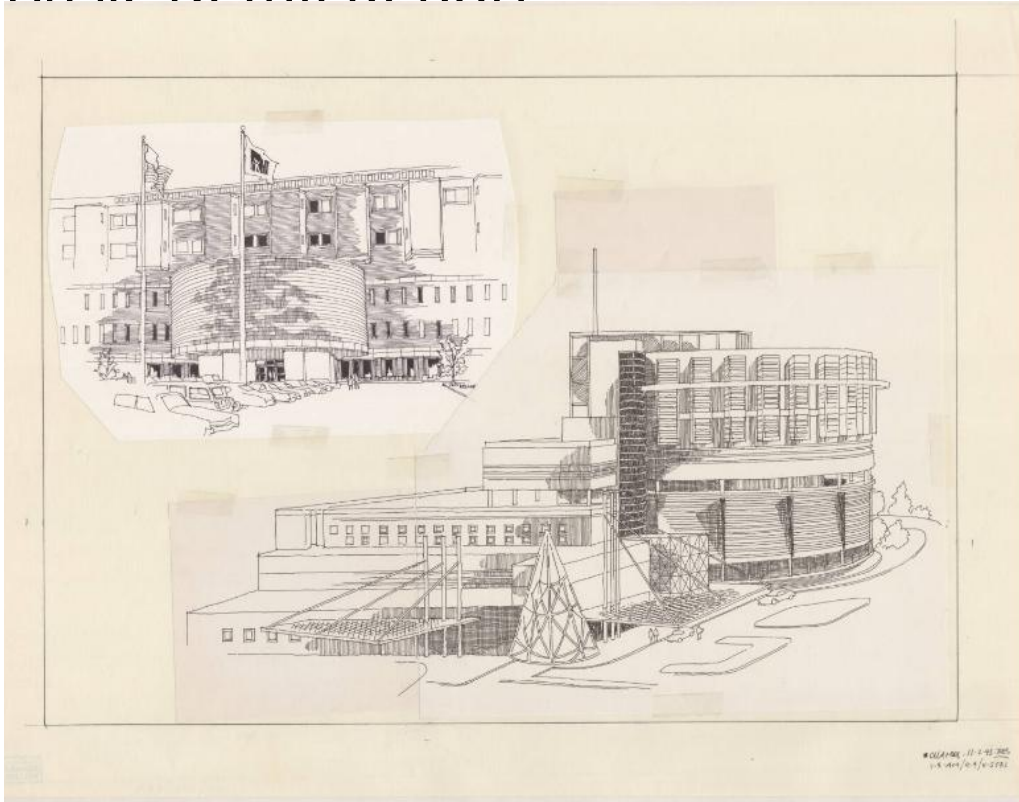


# Basic Detail Report



## **Title Connecticut Children's Medical Center, 282 Washington Street, Hartford, Connecticut**

Date 1993

Primary Maker Richard Welling

Medium Serigraphy; screen prints on paper, on paper

Description Screen prints after drawings of two views of the Connecticut Children's Medical Center on Washington Street, Hartford. The building features a semi-circular protrusion at its entrance. The image at the top of the sheet of paper includes two flagpoles, one flying the United States flag and the other flying an unidentified flag. There are automobiles in the parking lot. The image at the bottom shows two very large overhangs, one on the front and one on the side of the building. There is also what appears to be a sculpture in the shape of a stylized evergreen tree in between the overhangs.

# Basic Detail Report

Dimensions Primary Dimensions (image height x width): 14 3/4 x 20 7/8in. (37.5 x

53cm) Sheet (height x width): 18 1/8 x 23 7/8in. (46 x 60.6cm)