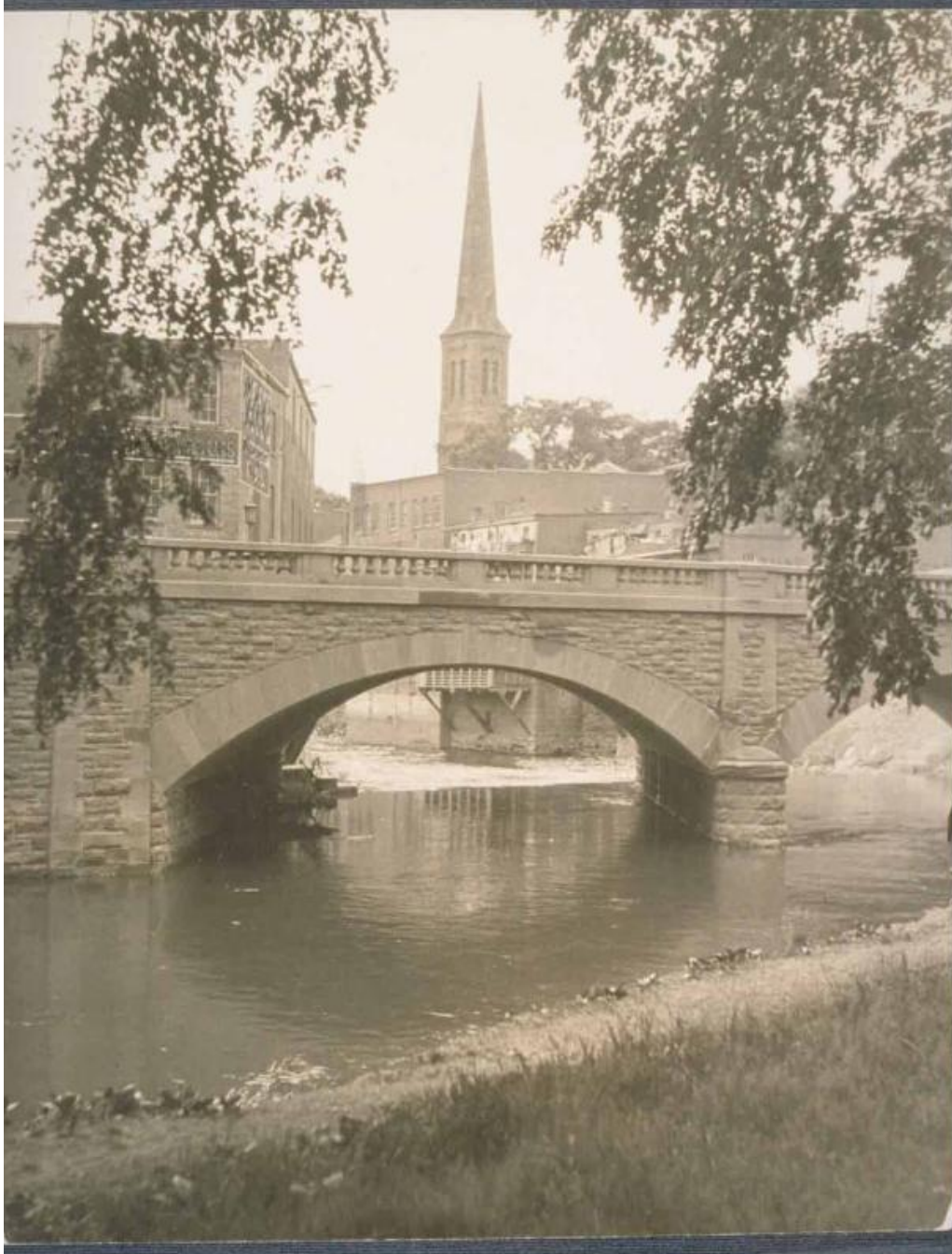


Basic Detail Report



Title Hudson Street bridge over Park River, Hartford.

Date about 1920

Primary Maker Unknown

Medium Photography; gelatin silver print on paper

Description View of Hudson Street bridge looking east. It is a two-span arch structure, with each span 44 feet in length, and the bridge being 60 feet wide.

Basic Detail Report

The steeple in the background is part of the old South Baptist Church at 455

Main Street.

Dimensions Primary Dimensions (overall height x width): 9 7/16 x 7 7/8in. (24 x

20cm)