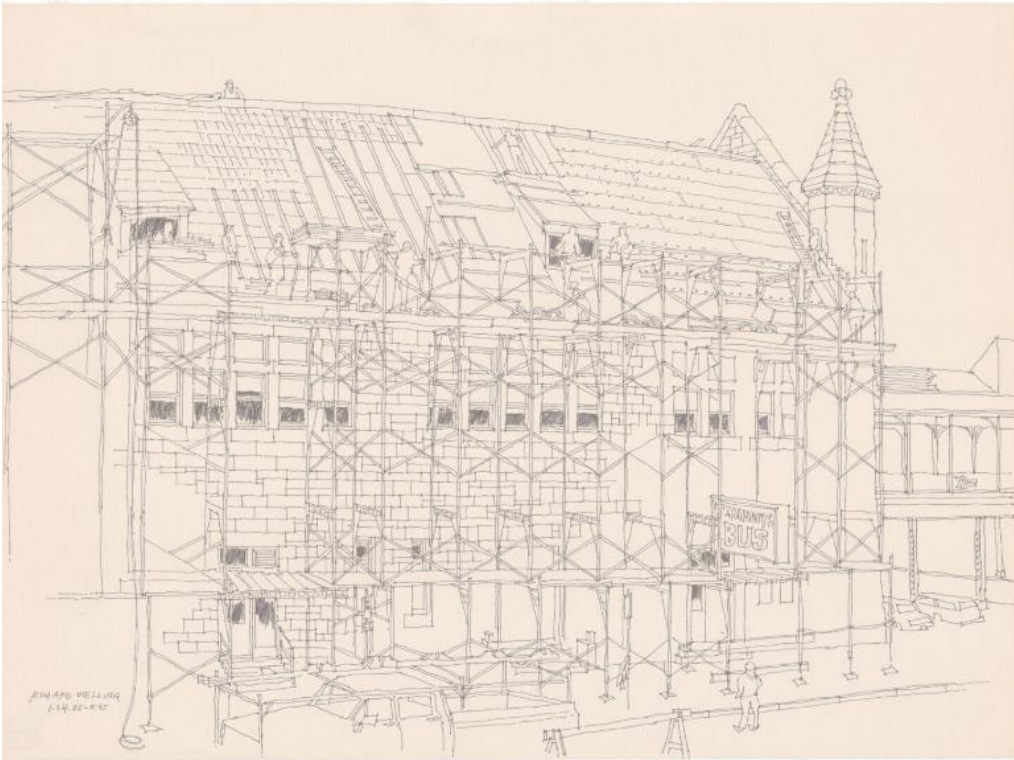


Basic Detail Report



Title Union Station Undergoing Renovations, Hartford, Connecticut

Date 1985

Primary Maker Richard Welling

Medium Drawing; black ink on paper

Description Drawing of Union Station in Hartford, Connecticut. The building is covered in scaffolding and there are people on the top level working on the roof.

The Trailways Bus sign is visible in the lower right.

Dimensions Primary Dimensions (image height x width): 16 x 22in. (40.6 x 55.9

cm) Sheet (height x width): 16 x 22in. (40.6 x 55.9cm)