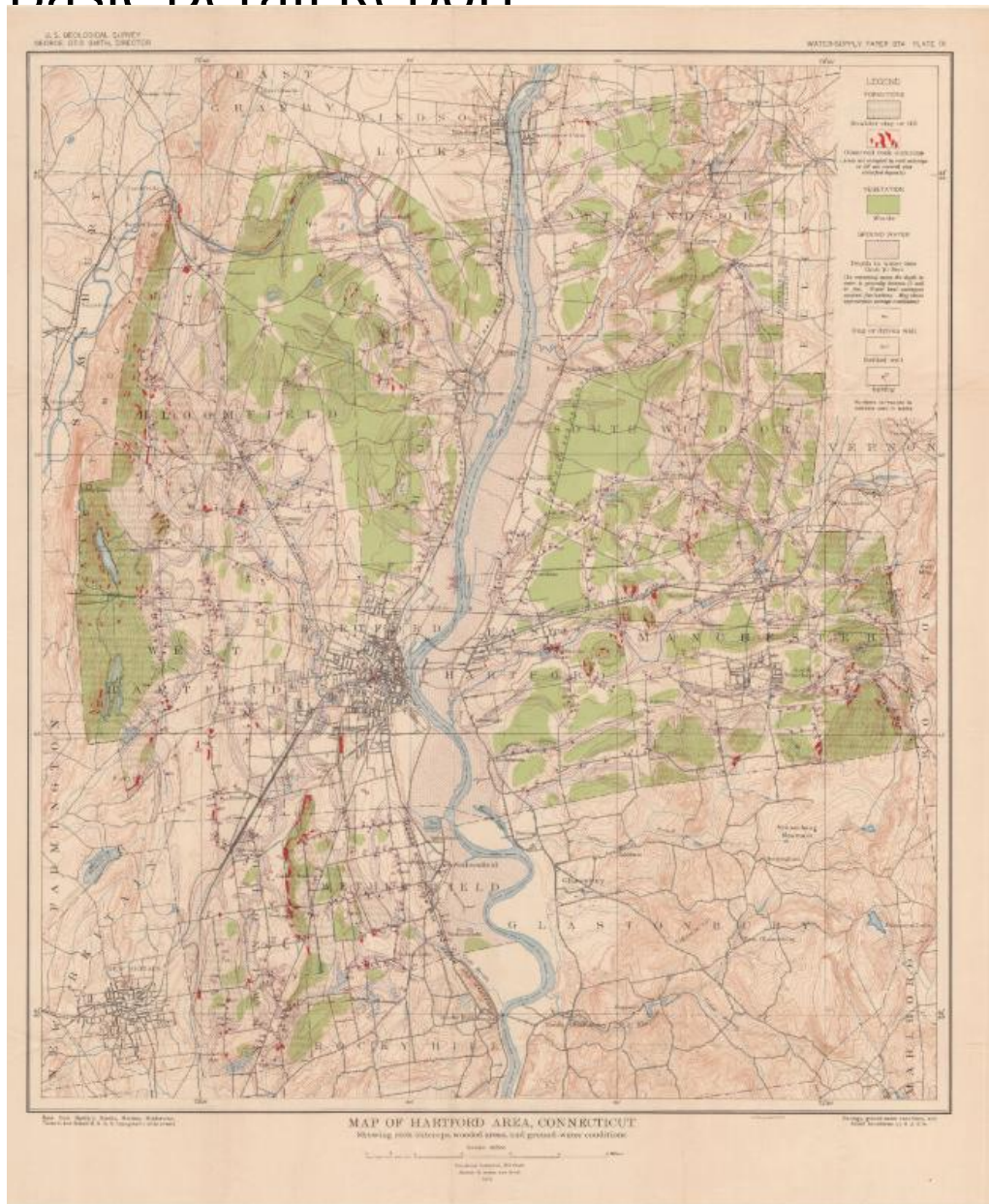


Basic Detail Report



Title Map of Hartford Area, Connecticut

Date 1915

Primary Maker United States Geological Survey

Medium Lithography; black and colored printer's inks on wove paper

Description Map of Hartford, Connecticut, and the surrounding area, from Windsor Locks to the north, the town line of Bolton and the Tolland County line to the east, Rocky Hill to the south, and Farmington and Simsbury to the west.

Basic Detail Report

Colors, lines and symbols are used to denote boulder clay or till, rock

outcroppings, elevation, woods, ground water, dug or driven wells, drilled wells,

and springs. There are numbers next to the wells and springs that correspond to

numbers used in tables (not provided). Blue is used to denote water, including

rivers, reservoirs, lakes and ponds. City streets are shown, with black squares

and dots probably representing buildings. The New York, New Haven and

Hartford; New England and Western; and New York and New England Railroads

are shown.

Dimensions Primary Dimensions (image height x width): 22 1/8 x 19 3/8in. (56.2 x

49.2cm) Sheet (height x width): 25 x 21 1/8in. (63.5 x 53.7cm)