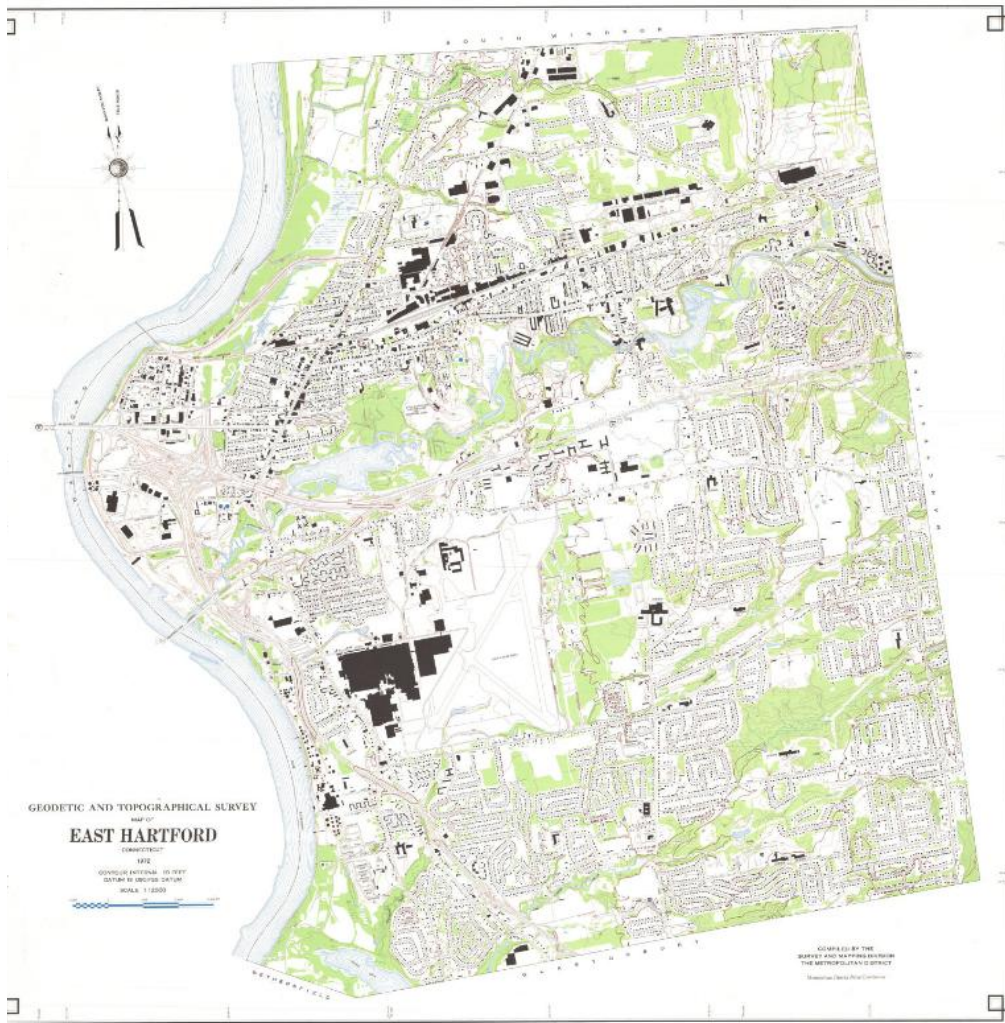


Basic Detail Report



Title Geodetic and Topographical Survey Map of East Hartford, Connecticut

Date 1972

Primary Maker Metropolitan District Commission

Medium Lithography; colored printer's inks on wove paper

Description Map of East Hartford, Connecticut, from the town line of South Windsor to the north, Manchester to the east, Glastonbury to the south, and the Connecticut River to the west. Highways and local roads are depicted and labeled, and schools, parks, cemeteries, golf courses, and "open spaces" are

Basic Detail Report

colored green, with water depicted in blue, including the Hockanum River,

Keeney Cove, Porter Brook and several small unnamed bodies of water.

Buildings are shown in black and contour intervals are shown in red. A compass

pointing to magnetic north and true north is at upper left.

Dimensions Primary Dimensions (image height x width): 29 x 29in. (73.7 x 73.7

cm) Sheet (height x width): 30 1/8 x 30 1/8in. (76.5 x 76.5cm)