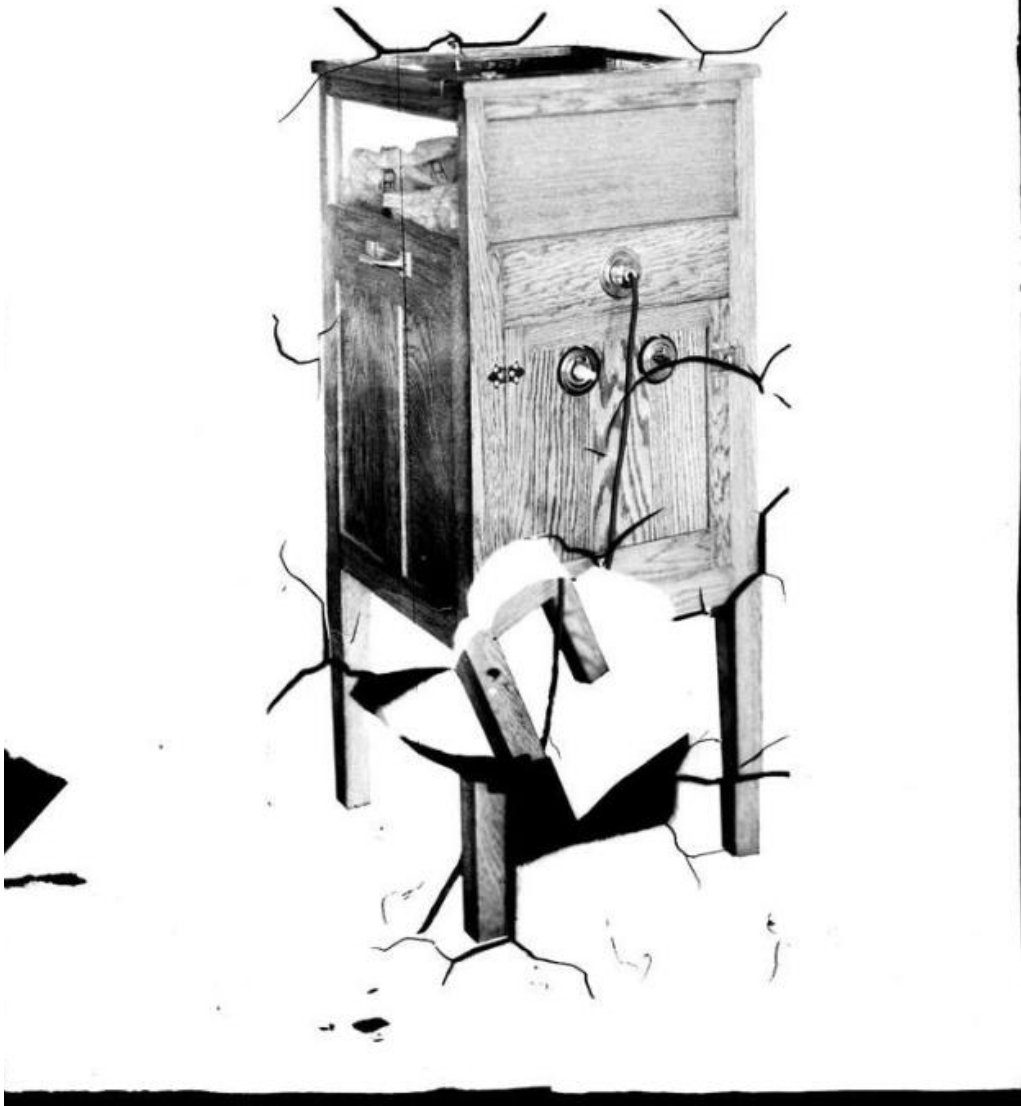


# Basic Detail Report



**Title** Peanut Machine

Date 1916-1927

Primary Maker William G. Dudley

Medium Photography; gelatin emulsion on glass

# Basic Detail Report

Description An electrical machine probably used for warming peanuts in retail, drug, and general stores. The machine stands on four legs and has a wooden exterior. An electric cable is visible extending out from the side of the machine.

Dimensions Plate (height x width): 10 x 8in. (25.4 x 20.3cm)