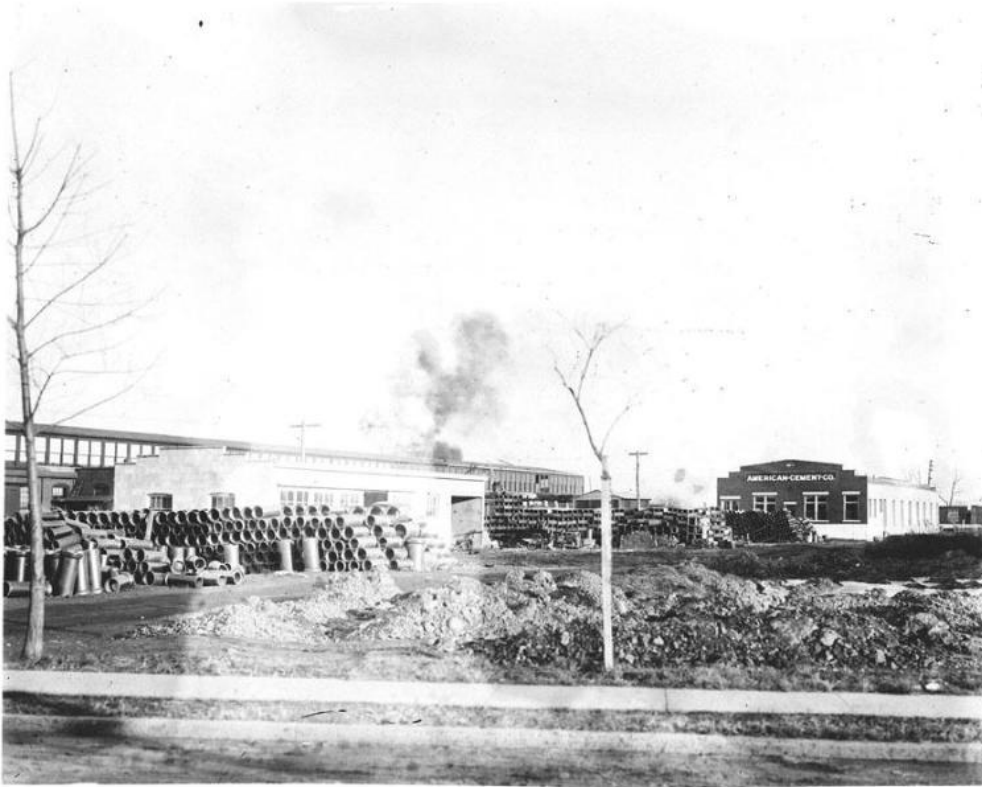


Basic Detail Report



Title American Cement Company, Fishfry Street, Hartford

Date 1916-1927

Primary Maker William G. Dudley

Medium Photography; gelatin emulsion on glass

Description American Cement Company property located on Fishfry Street in the north end of Hartford. Behind the stacks of pipes and other materials is a warehouse building and a one-story office building with sign reading "AMERICAN CEMENT CO." across the top of the building's façade. Leafless trees are in the foreground.

Dimensions Plate (height x width): 8 x 10in. (20.3 x 25.4cm)