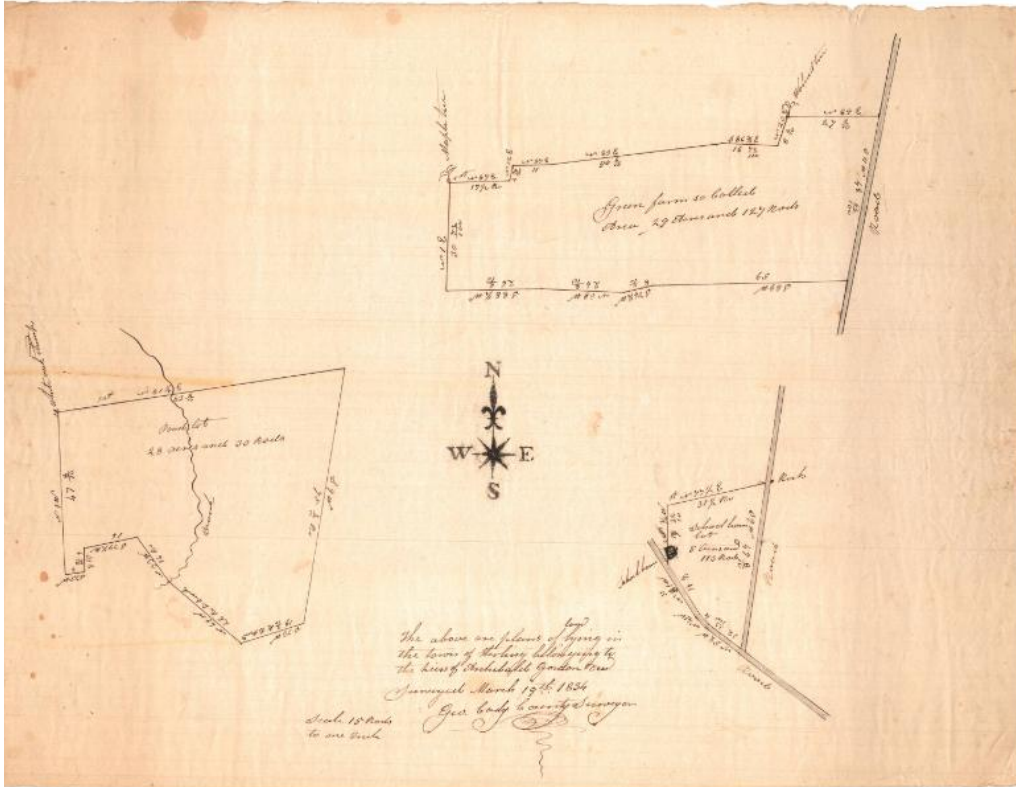


# Basic Detail Report



**Title** The above are plans of land lying in the town of Sterling  
belonging to the heirs of Archibald Gordon

**Date** 1834

**Primary Maker** George Cady

**Medium** Drawing; black ink on wove paper

**Description** Three plat maps on one sheet of paper, depicting a farm lot, a schoolhouse lot and a pond lot. Geographic coordinates are given, as are dimensions in feet (presumably) and area in acres and rods. The only building depicted is the school house.

**Dimensions** Primary Dimensions (image height x width): 15 3/8 x 20 1/4in. (39.1 x 51.4cm) Sheet (height x width): 15 3/8 x 20 1/4in. (39.1 x 51.4cm)