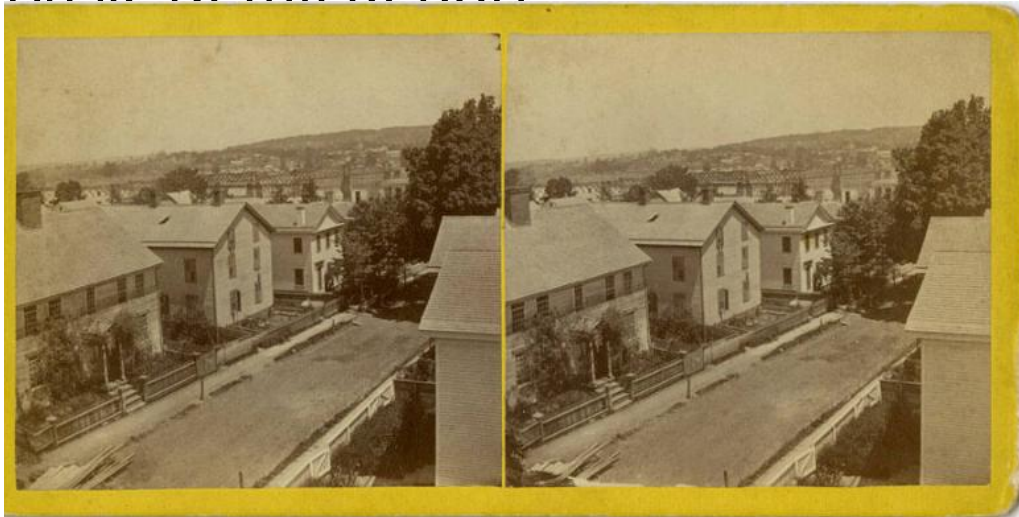


Basic Detail Report



Title Views of Middletown

Date 1860-1880

Primary Maker Horace L. Bundy

Medium Photography; albumen prints on paper on cardboard mounts

Description Views of Middletown include street scenes, one with snow on the ground, commercial buildings including the store of Matthewman & Lewis / C. T. Candee & Co., the Hubbard Hardware Company, the Insane Hospital, two stone bridges, evidently railroad bridges, a railroad tunnel, an iron bridge across the Connecticut River, a group of men on horseback outside a frame house, and a brook in the woods, identified as "Student's Glen." Part of the John S. Craig Collection.

Dimensions Primary Dimensions (image height x width): $3 \frac{3}{16} \times 3 \frac{3}{16}$ in. (8.1 x 8.1cm) or smaller Sheet (height x width): $3 \frac{3}{16} \times 3 \frac{3}{16}$ in. (8.1 x 8.1cm) or smaller Mount (height x width): $3 \frac{3}{8} \times 6 \frac{15}{16}$ in. (8.6 x 17.6cm)