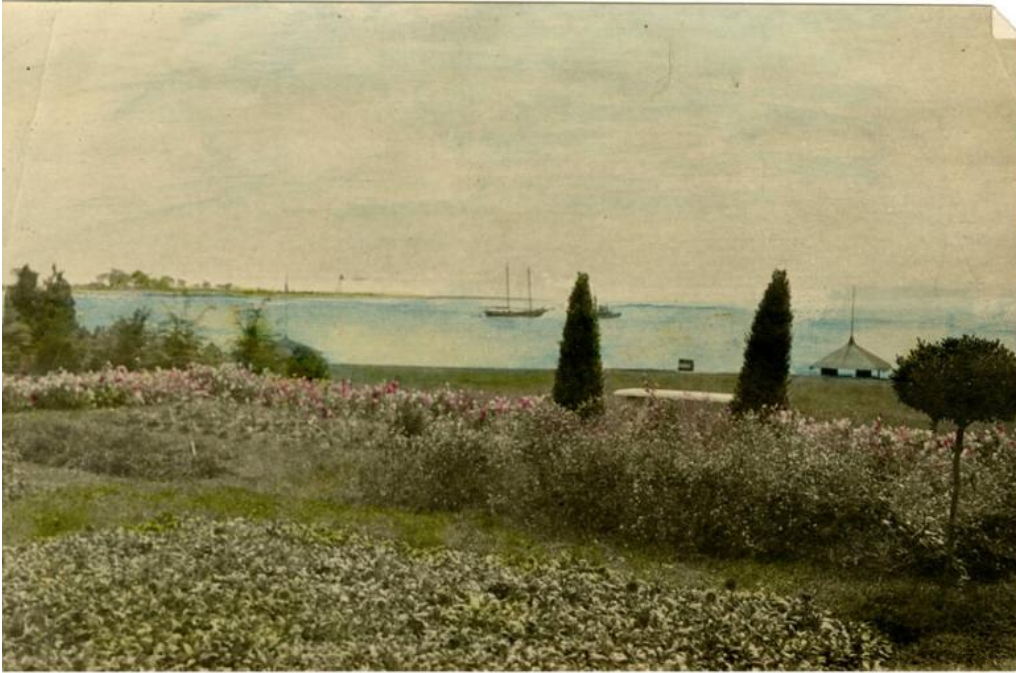


Basic Detail Report



Title Landscaped Lawn and Shoreline

Date about 1900

Primary Maker Harriet V. S. Thorne

Medium Photography; gelatin silver print on paper

Description A lawn with plant beds and topiary trees, looks out onto a body of water. There are two boats on the water, and another part of the shoreline or a small island is on the left.

Dimensions Primary Dimensions (image height x width): 5 13/16 x 9 1/16in. (14.8 x 23cm) Sheet (height x width): 5 1/2 x 9 1/16in. (14 x 23cm)