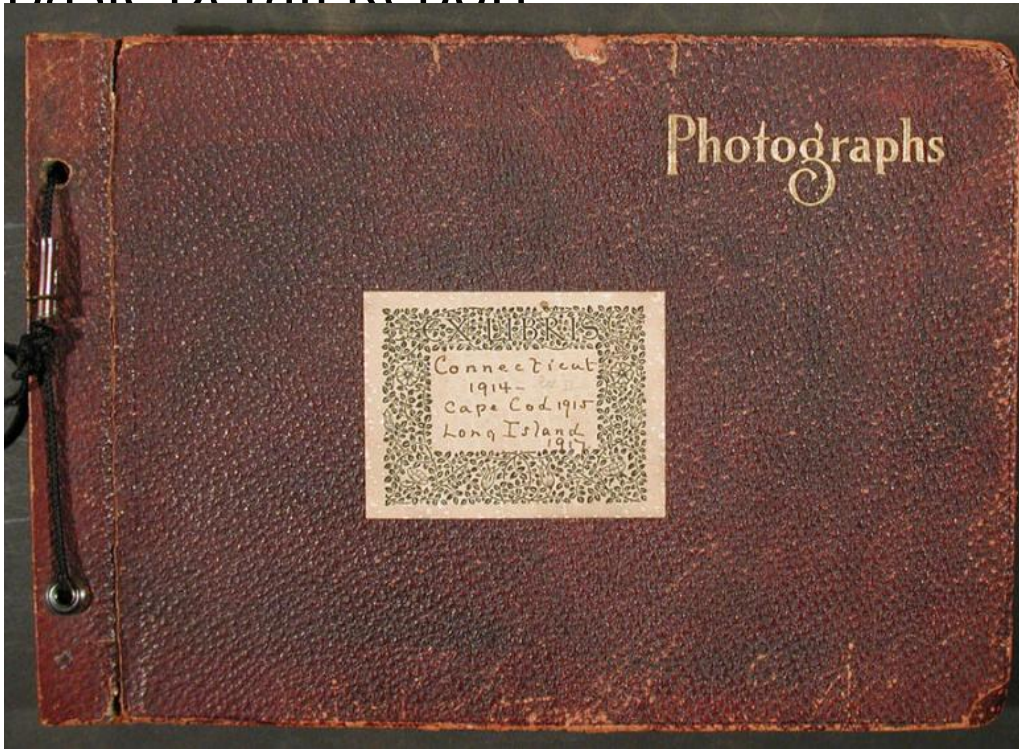


Basic Detail Report



Title Hammer Family Photograph Album: Connecticut, Cape Cod, and Long Island

Date 1914-1917

Primary Maker Alfred E. Hammer

Medium Photography; gelatin silver prints, mounted on paper pages, in leather-covered album

Description Views of various Connecticut locations including Kelsey's Island and Pawson Park in Branford, Deep River, Nut Plains in Guilford, Haddam Neck, Elizabeth Park in Hartford, Brockway's Ferry in Lyme, the State Game Preserve in Madison, Middle Haddam, Middletown, Pirate's Cove in New Haven, North Haven, Norwich, Redding, South Lyme, Voluntown, Quonopaug in Woodbury
Subjects include men fishing with a net in Branford, Governor Jonathan Trumbull's war office in Lebanon, a feldspar quarry in Middletown, a galena

Basic Detail Report

mine in Monroe, an airplane above Waterbury, and numerous views of the

Connecticut River, the Eight Mile River, and the Salmon River. Locations outside

Connecticut include not only Cape Cod and Long Island, but also Ashfield and

Concord, Massachusetts; Newport, Rhode Island; and Vermont. Some

photographs include Alfred E. Hammer's sons Forrester and Thorkil, his

daughters Delphina and Rosalind, and his wife Rosamond.

Dimensions Primary Dimensions (image height x width): 5 1/4 x 5 1/2in. (13.3 x

14cm) Sheet (height x width): 7 3/4 x 11 1/4in. (19.7 x 28.6cm) Other (album

height x width x depth): 8 x 11 1/2 x 1 1/2in. (20.3 x 29.2 x 3.8cm)