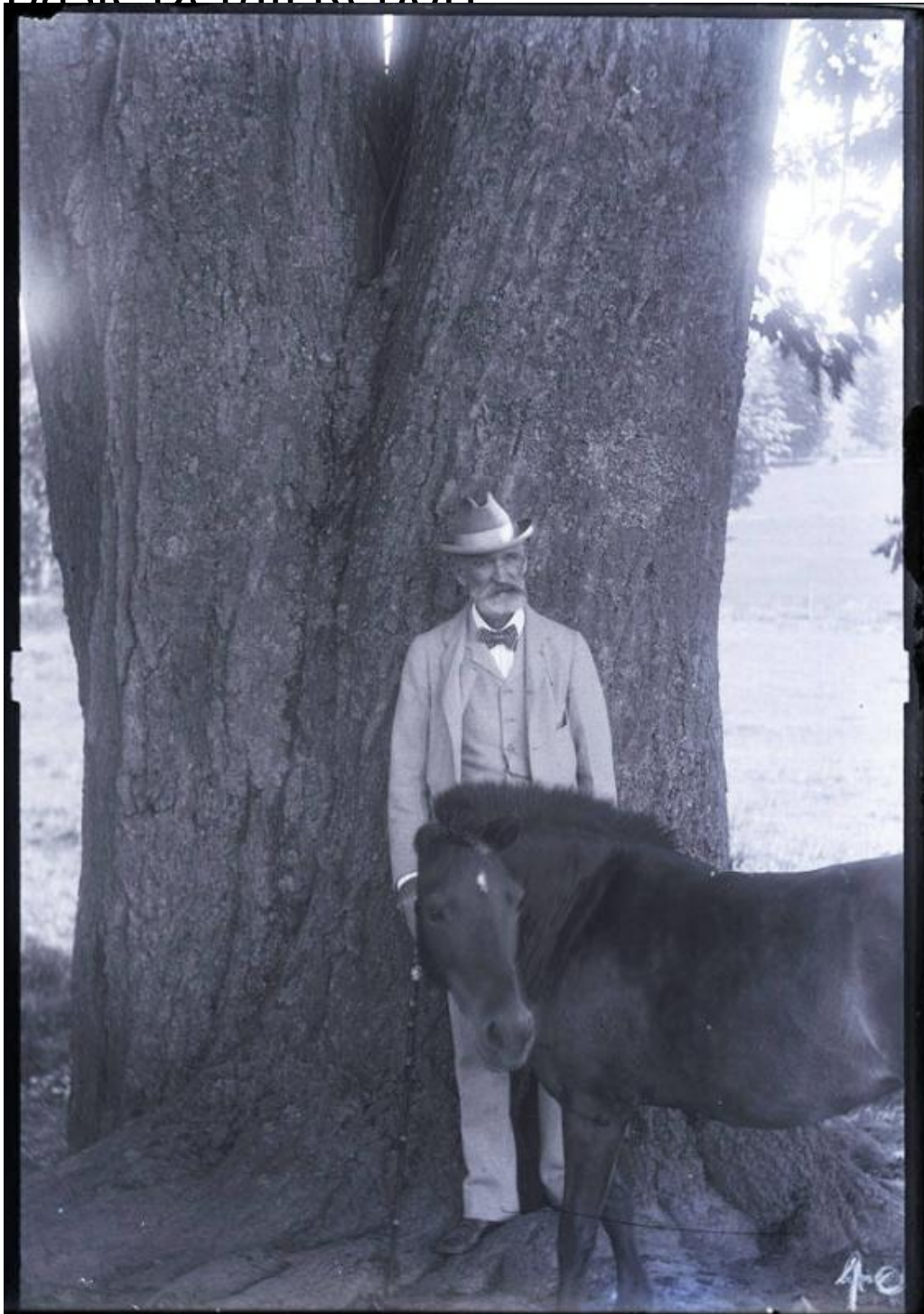


Basic Detail Report



Title Samuel Thorne In Front of Tree with Pony

Date about 1900

Primary Maker Harriet V. S. Thorne

Medium Photography; gelatin emulsion on glass

Basic Detail Report

Description Samuel Thorne, wearing a suit and hat, is standing in front of a large tree, only the trunk of which is visible. There is a small horse/pony standing in front of him with its head turned.

Dimensions Primary Dimensions (image height x width): 6 7/8 x 4 11/16in. (17.5 x 11.9cm) Plate (height x width): 7 x 5in. (17.8 x 12.7cm)