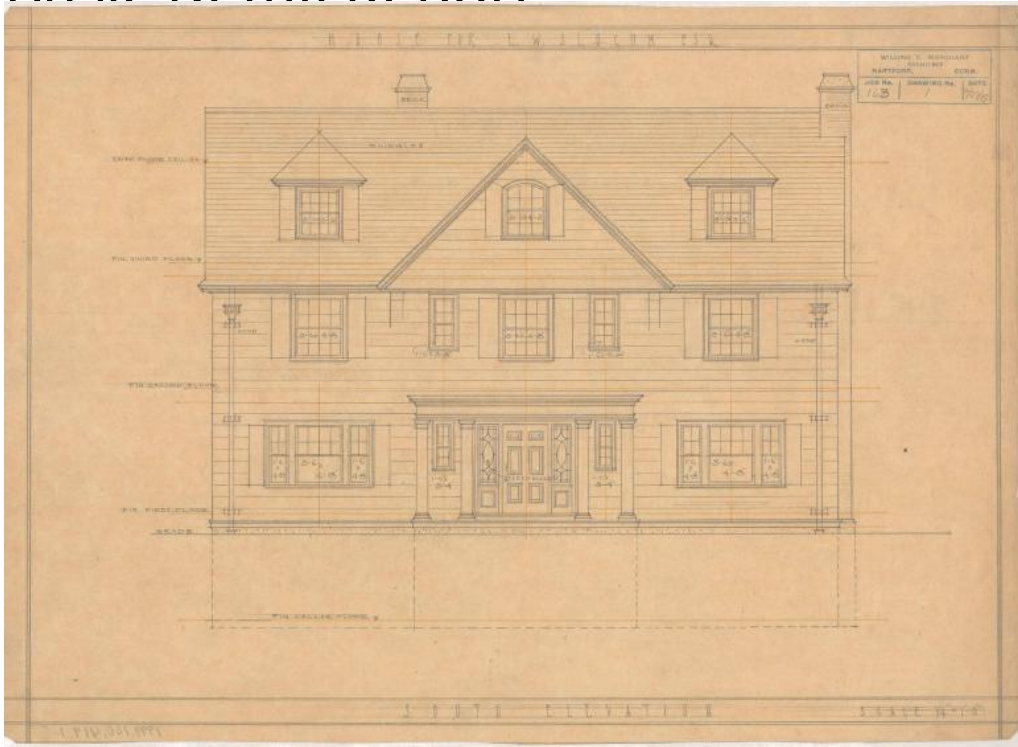


Basic Detail Report



Title House for L.W. Slocum, probably Hartford

Date 1919

Primary Maker William T. Marchant

Medium Architectural drawings, pencil and yellow ink on waxed tracing paper.

Description Plans for a three story colonial revival house feature a combined hipped and gable roof with overhanging eaves, cross gable on the south elevation, and clipped gable dormers on the third floor level. A notable feature of the house is the recessed front entry which includes a Greek revival style entablature supported by engaged doric columns, as well as a raised paneled door with sidelights featuring leaded tracery detail. Windows on the house comprise of louvered double-hung sash windows in multiple configurations, with large tri-part windows featured on the south and north elevations, and grouped casement windows featured on the north, east, and west elevations.

Basic Detail Report

Eight drawings are included in the set: south, north, east, and west elevations, as well as, cellar, first floor, second floor, third floor and roof plans. The cellar plans include a vegetable room, preserves room, laundry room, toilet, coal or wood bin, heater coal bin, and heater room. The first floor plans include a sun parlor, living room, recessed entry porch, entry hall, dining room, butler's pantry, rear passage, rear porch, pantry, kitchen, den, and lavatory. The second floor plans include four chambers (bedrooms), two bathr ooms, a sleeping porch, sewing room, hall, linen closet, and rear hall. The third floor plans include four chambers, two storage rooms, hall, and bath room.

Dimensions Primary Dimensions (height x width): 19 1/2 x 13 3/4in. (49.5 x 34.9 cm)