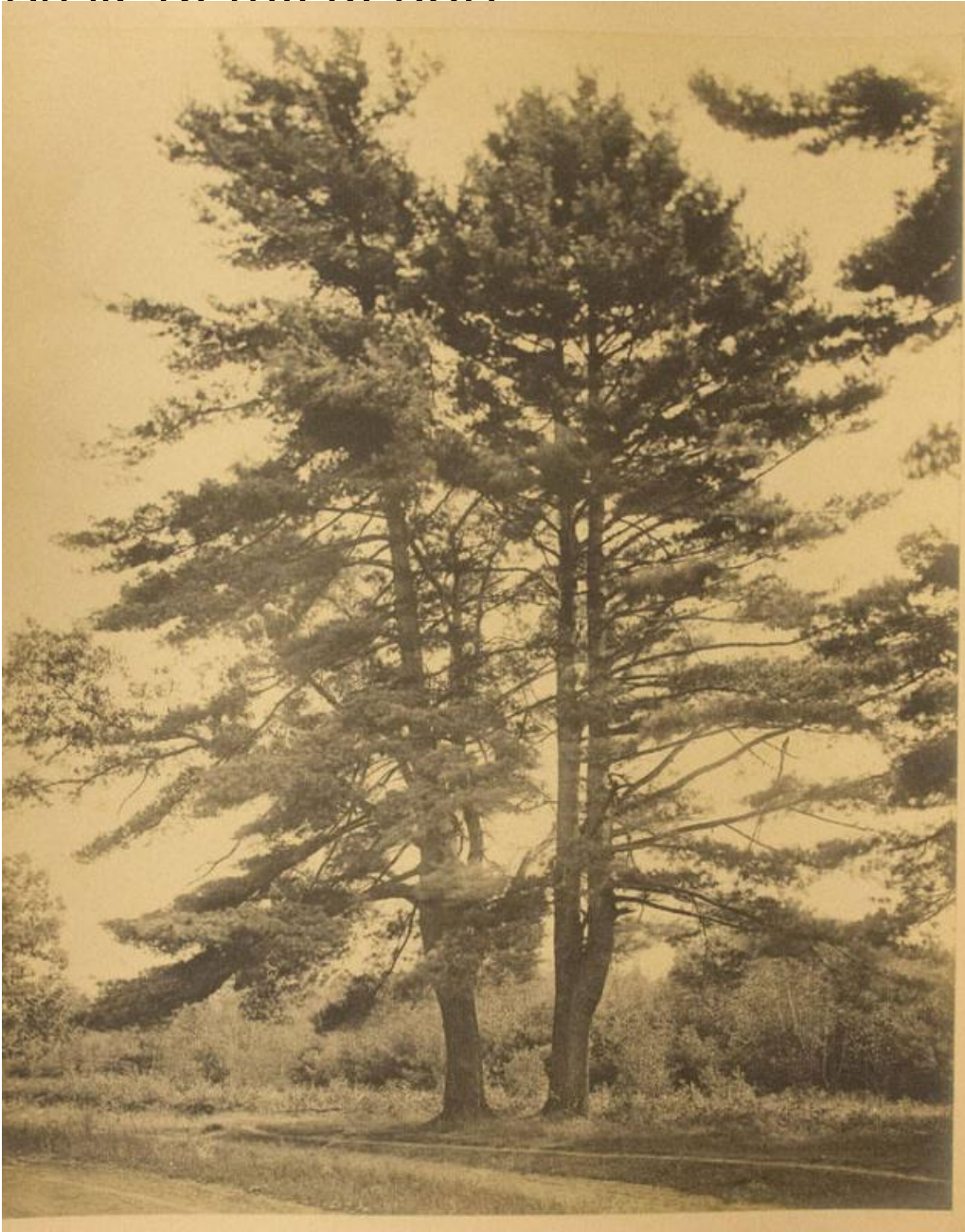


# Basic Detail Report



**Title** On the Road to South Manchester, via Silver Lane

**Date** 1885-1890

**Primary Maker** Frederick S. Brown

**Medium** Photography; albumen print on paper on cardboard mount

# Basic Detail Report

Description Two tall trees, apparently white pine trees, are situated beside a dirt road. A dirt footpath is in the grassy area between the road and the trees.

Bushes and small trees are in the background.

Dimensions Primary Dimensions (image height x width): 22 x 18in. (55.9 x 45.7

cm) Sheet (height x width): 22 x 18in. (55.9 x 45.7cm) Mount (height x width): 20 x

27 1/2in. (50.8 x 69.9cm)