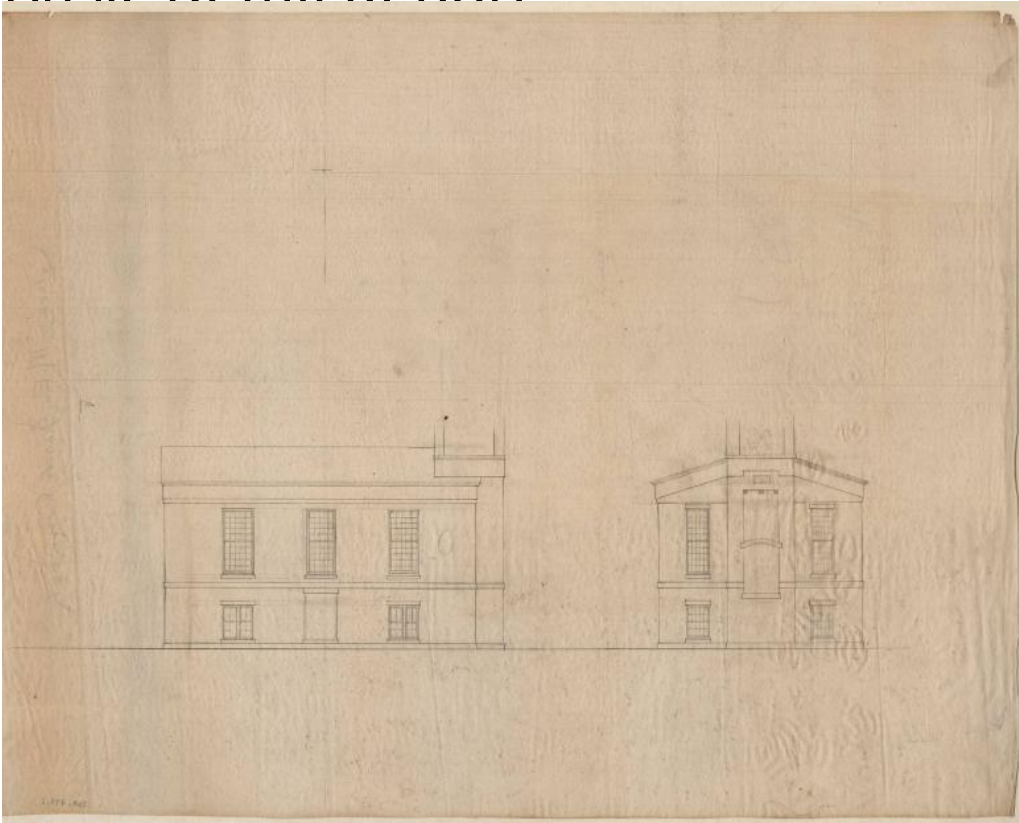


# Basic Detail Report



## Title M. E. Zion Church

Date late 19th century

Primary Maker Barrett Bros.

Medium Architectural drawings; pencil on tracing paper.

Description Plans for a two-story rural colonial style church, showing a partial side elevation, and possible front or rear elevation with belfry tower. Both elevations only show the lower two story portion of the belfry tower. The plans call for a gable roof, with a wide cornice and banding between stories. Windows appear as large double hung multi-light sash windows on the second story, with smaller ten-over-ten and four-over-four double-hung sash windows on the first story.

Dimensions Sheet (height x width): 17 x 21in. (43.2 x 53.3cm)