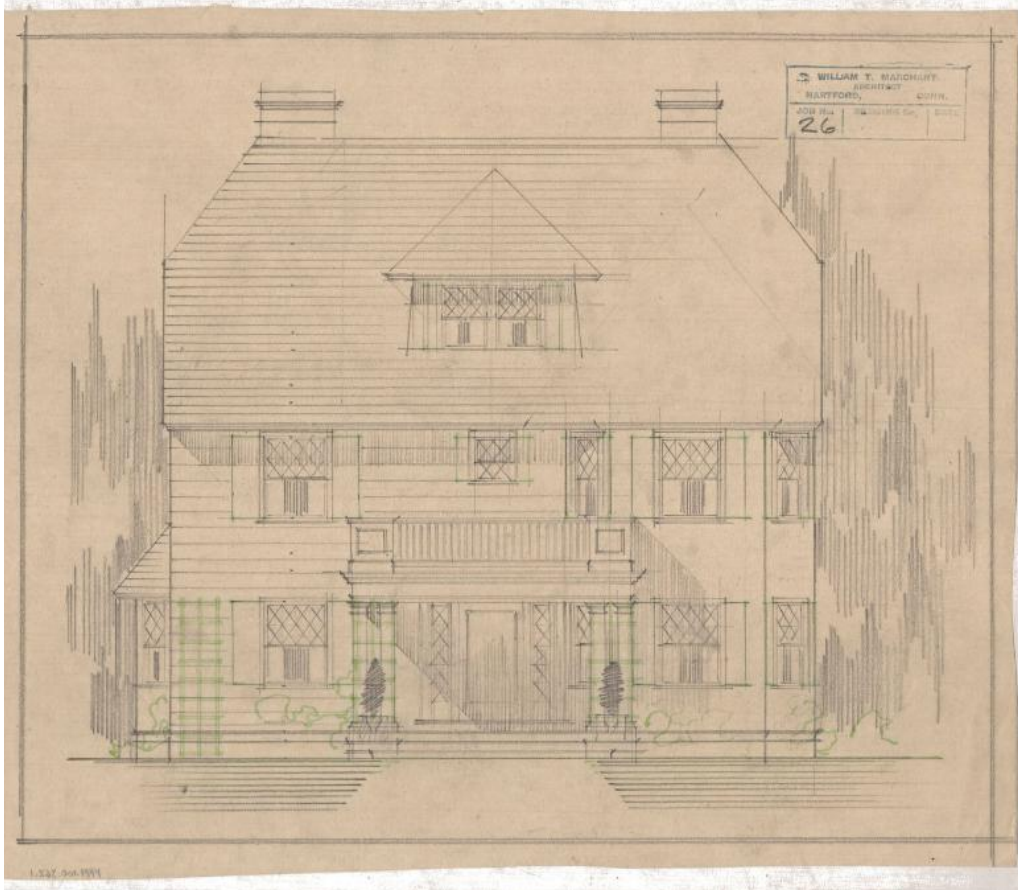


Basic Detail Report



Title House for an Unknown Client, probably Hartford

Date about 1915

Primary Maker William T. Marchant

Medium Architectural drawings; pencil and colored pencil on tracing paper.

Description Plans include three variant designs for a three story Colonial Revival house, featuring a hipped roof with overhanging eaves. Hipped roofs are also featured on the second floor rear balcony, and attic dormer windows. Other notable features of the house include front and rear porches supported by doric columns, as well as a glass paneled front door, and large three-sided bay window on the rear elevation. Windows on the house are primarily louvered double-hung sash windows in either the six-over-six, or six-over-one configurations. Other windows include a large tri-part window on the first floor

Basic Detail Report

front elevation, and a rounded arch sash window found at the second floor stair landing on the rear elevation. Twenty-one drawings comprise the set, including front, rear, north, and south elevations, as well as cellar, first floor, second floor, and attic plans. The cellar plans include a laundry, cold room, heater coal room, range coal room, and heater. The first floor plans include a rear porch, pantry, butler's pantry, kitchen, dining room, entry hall, living room, and veranda. The second floor plans include four chambers, a bath, hall, linen closet, and balcony. The attic plans include a chamber with closet.

Dimensions Primary Dimensions (height x width): 15 1/2 x 12 1/4in. (39.4 x 31.1 cm)