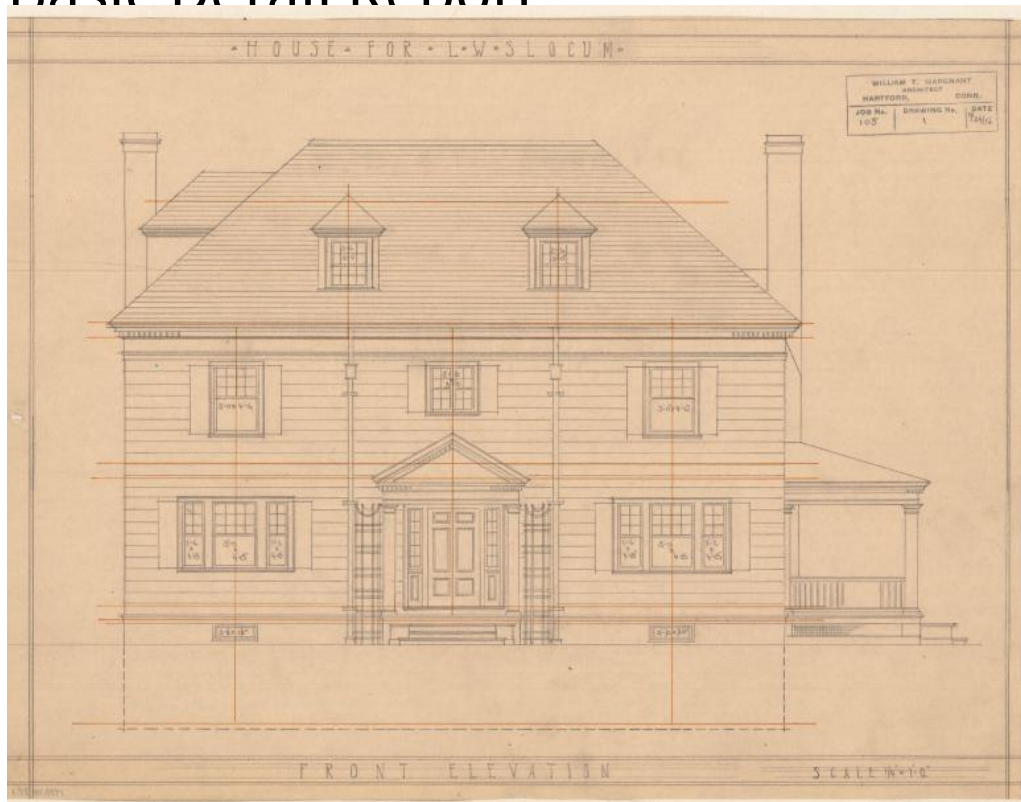


# Basic Detail Report



## Title House for L. W. Slocum, probably Hartford

Date 1916

Primary Maker William T. Marchant

Medium Drawings; pencil on tracing paper, with orange dimensional lines

Description Plans for a two-story Colonial Revival house show clapboard siding, hip-roofed dormers, two chimneys, and lattice. The drawings include front, rear, and side elevations, and floor plans for the cellar, first, second, and attic levels.

The cellar has a laundry room, coal room, and cold room. Included on the first floor are two porches, a veranda, living room, dining room, hall, kitchen, den, pantry, butler's pantry, and one closet. The second floor has four chambers (bedrooms), six closets, one linen closet, and hall. The attic has three chambers, three closets, a storage room, bathroom, and hall.

# Basic Detail Report

Dimensions Primary Dimensions (height x width): 13 3/16 x 17 1/4in. (33.4 x 43.8

cm)