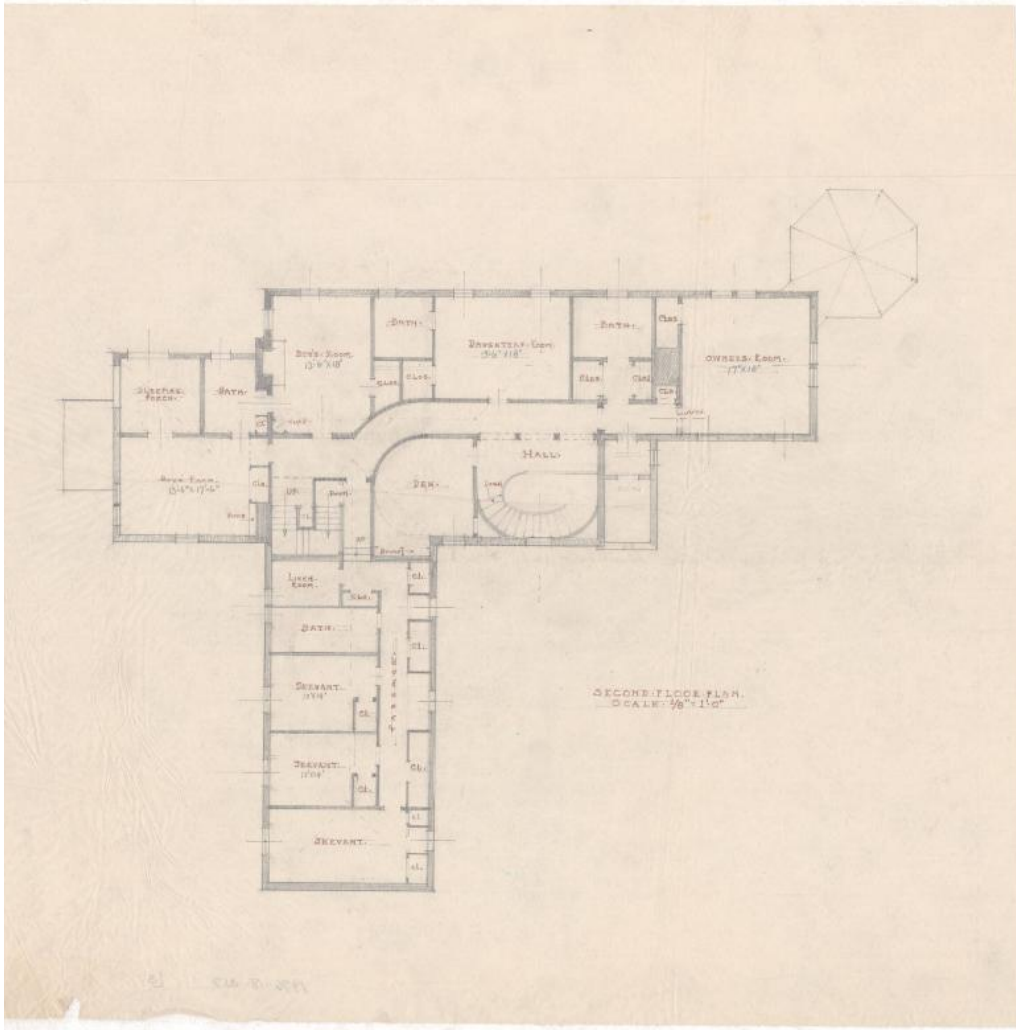


Basic Detail Report



Title House for Albert Newfield, Prospect Avenue, Hartford

Date 1929

Primary Maker Smith & Bassette

Medium Architectural Drawings; pencil, colored pencil, black ink, and red ink on tracing paper

Description Plans for a four story French Revival house with garage. The house features a steep pavillion hipped roof with cornice detailing, rubblestone foundation, typical tall styled chimneys and large hipped dormer windows on the attic level . The house is stucco over brick, with exposed modillion coursing found around the first floor balconies and doors. Other notable features of the

Basic Detail Report

house include a large octagonal covered porch off the sun room, which leads to

the lower terrace, and a decorative cupola with weathervane over the garage

walkway. A prominent feature of the house is the the four story rear elevation,

with a lower basement level terrace, and pool, as well as wrought iron balconies

along the first floor elevation. Drawings in the set include basement, first floor,

and second floor plans, as well as plans for the east, west and south elevations.

The basement plans include storage, wood bin, toilet, a large play room,

outdoor pool, hall, store room, laundry, boiler room, and closet. The first floor

plans include an entrance court, service court, and covered way between house

and garage, as well as the octagonal porch, a sun room, entry porch and

vestibule, hall, coat room, toilet, living room, dining room, butler's pantry,

kitchen with alcove, side porch, and garage. The second floor plans include an

owner's room and a daughter's room, both with ensuite baths, two boy's rooms

with a shared bath, sleeping porch, hall, den, linen room, servant's passage,

bath, and three servants' rooms.

Dimensions Primary Dimensions: 25 1/2 x 15 1/2in. (64.8 x 39.4cm)