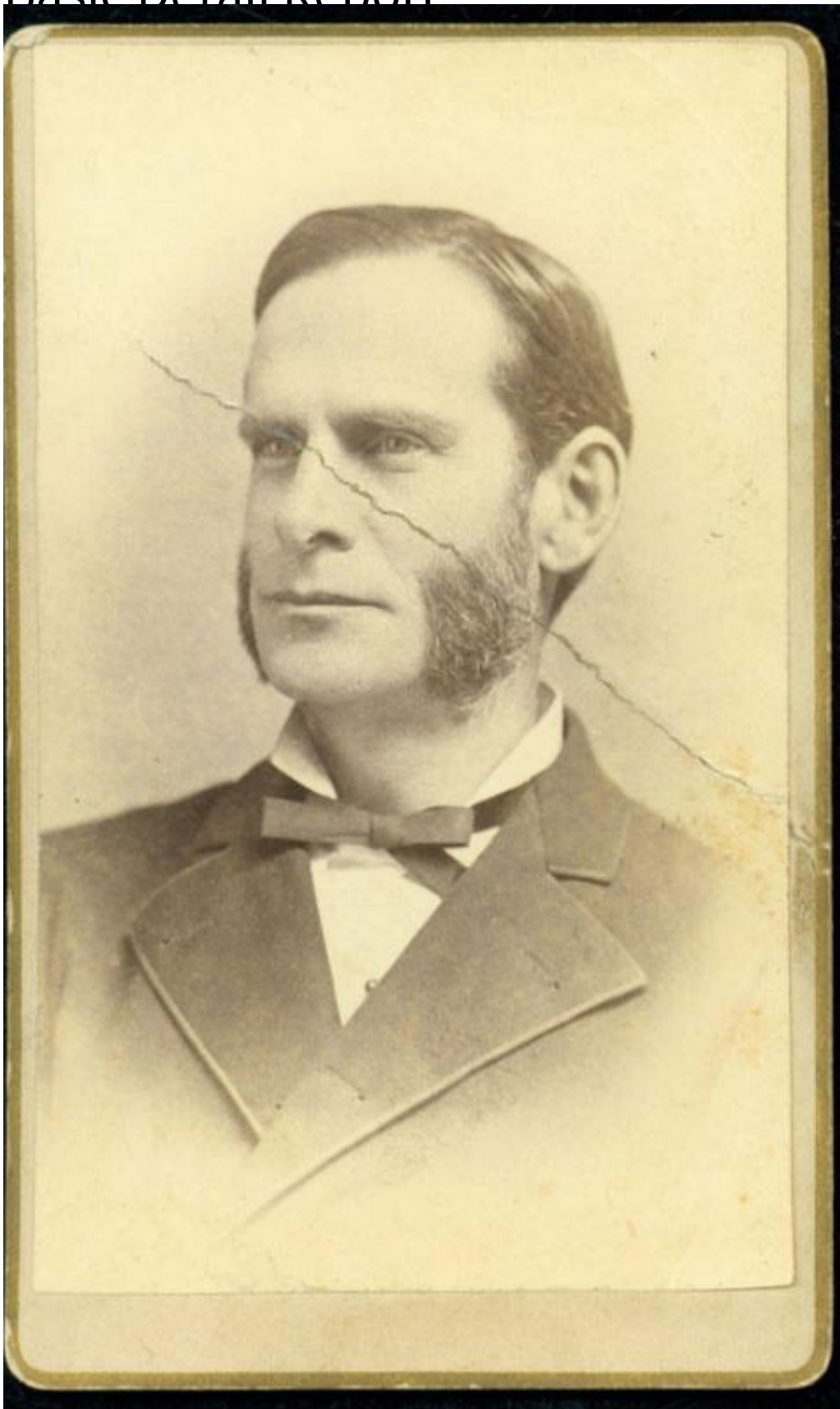


## Basic Detail Report



Title Reverend and Mrs. G.W. Lyon

# Basic Detail Report

Date about 1865

Primary Maker Wilbur F. Page

Medium Photography; albumen prints on paper on cardboard carte-de-visite mounts

Description Formal bust-length studio portraits of a man and a woman. She is wearing a dress with a lace jabot. He is wearing a coat over a shirt with a ribbon tie. He has long sideburns.

Dimensions Primary Dimensions (image height x width): 3 1/8 x 2 1/4in. (7.9 x 5.7 cm) Sheet (height x width): 3 3/4 x 2 1/4in. (9.5 x 5.7cm) Mount (height x width): 4 1/8 x 2 1/2in. (10.5 x 6.4cm)