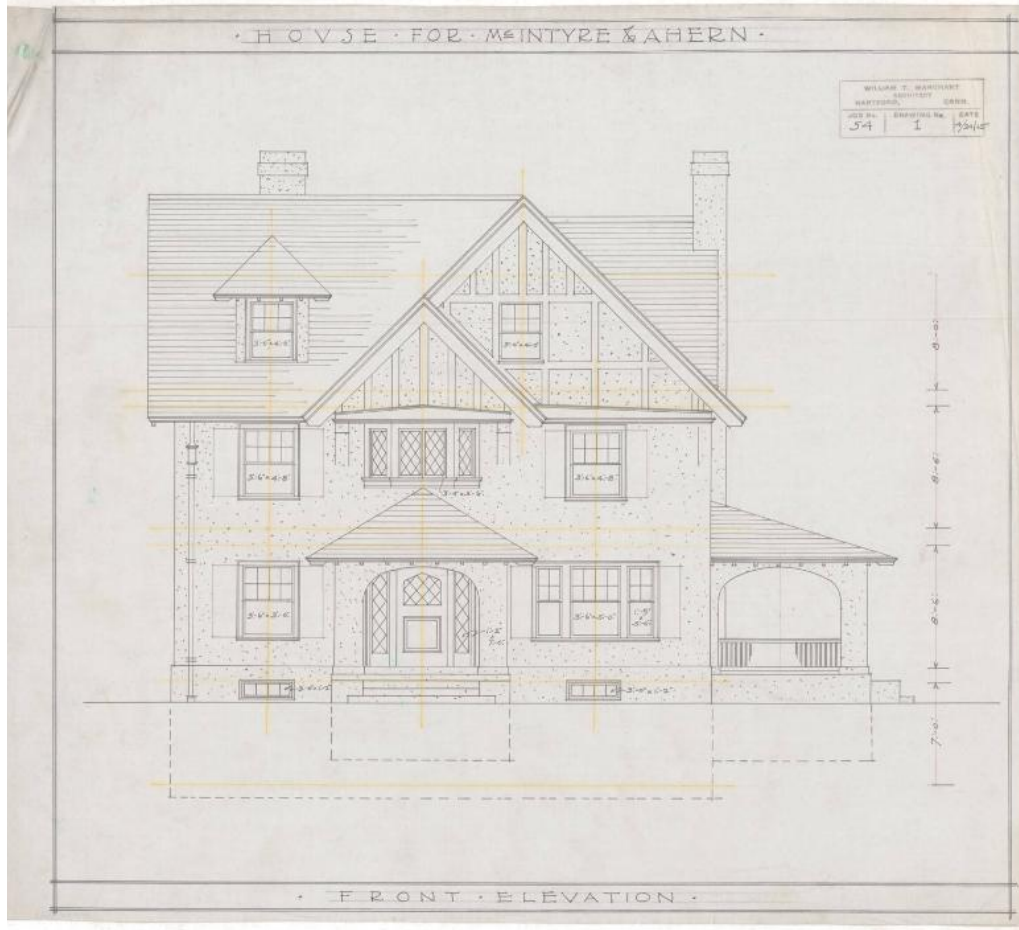


Basic Detail Report



Title House for McIntyre & Ahern, 226 Kenyon Street, Hartford

Date 1915

Primary Maker William T. Marchant

Medium Architectural Drawings, pencil, black, yellow red ink on linen paper.

Description Plans for a three-story stuccoed English Style house featuring an intersecting gable and hipped roof with projecting eaves. The front facade prominently features a double pitched gable roof with half-timber details, as well as a recessed entry, and veranda, both covered with hipped roofs. The north and south elevations also contain the intersecting gable and hipped roof with half-timber details on the gable roof ends. The windows on the house are primarily double hung sash windows, which vary from large tri-part windows, to

Basic Detail Report

standard eight-over-one, six-over-one, and four-over-one windows. The house also features diamond paned casement and double-hung shash windows as seen on the front and north elevations. Eight drawings are included in the set; front, south, rear and north elevations, as well as cellar, first floor, second floor, and attic and roof plans. The cellar plans include: a W.C., cold room, laundry room, and a heater coal and range coal room. The first floor plans include: the veranda, living room, dining room, rear porch, pantry, kitchen, butler's pantry, entry hall, den, and recessed entrance porch. The second floor plans include: four chambers, two bathrooms, hall, and sewing room. The attic and roof plans include: two maid's rooms, storage room, chamber, hall, and bathroom.

Dimensions Primary Dimensions: 16 x 18in. (40.6 x 45.7cm)