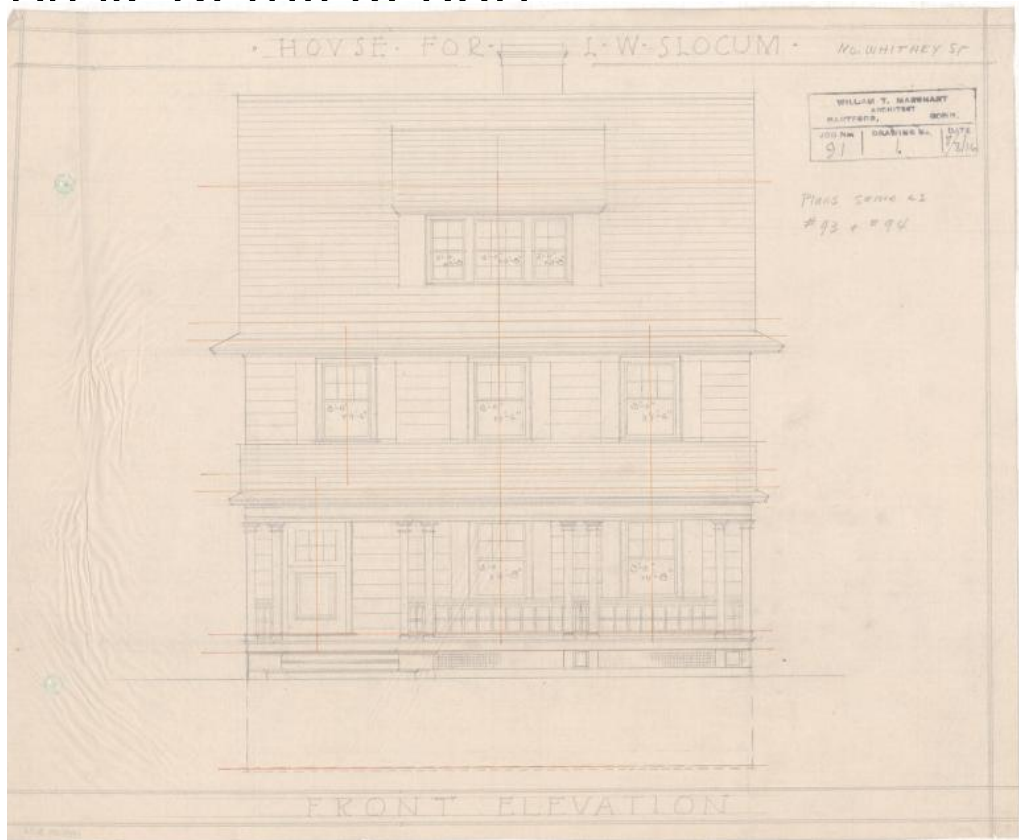


# Basic Detail Report



## Title House for Louis W. Slocum, 200 Whitney Street, Hartford

Date 1916

Primary Maker William T. Marchant

Medium Architectural Drawings, pencil on trace paper, with yellow guide lines.

Description Plans for a three story house, featuring a gable roof with projecting eaves. Other notable features include a large third floor dormer window, large front entry porch, and two rear porches, all supported by doric columns. The house features louvred double-hung sash windows primarily in the six-over-one, and four-over-one configurations with large tri-part windows on the North and Front Elevations.

Dimensions Primary Dimensions: 15 1/4 x 12 1/4in. (38.7 x 31.1cm)