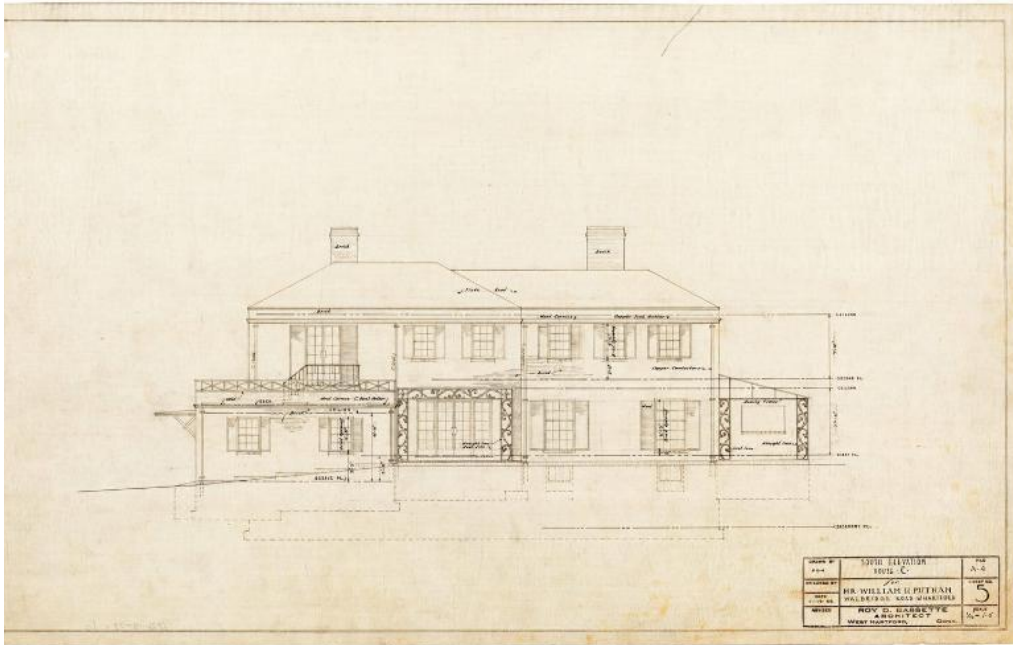


Basic Detail Report



Title House "C" For Mr. William H. Putnam, 94 Walbridge Rd, West Hartford

Date 1945

Primary Maker Smith & Bassette

Medium Architectural drawings; black ink and pencil on linen

Description Architectural plans for a two-story, Colonial Revival brick house with wood cornice, wide brick frieze band, and hipped roof. The west (side) elevation faces the street and there are cross-gable wings on the north (front) and south (rear) elevations. There are two inset brick chimneys flanking the projecting cross-gable wing on the north elevation. Fenestration throughout the home consists of a mix of double-hung, multi-pane sash, the majority being 6/6 arrangements. Most windows are flanked by wood shutters. Octagonal multi-pane windows are present on the west elevation and french doors can be found on the south and east sides of the home. An attached frame garage with brick

Basic Detail Report

veneer and flat roof is located at the southwest corner of the residence. It has two bays with overhead doors, a wood balustrade above, and a full-width pent roof with wood bracket-style supports. Wrought and cast iron scrollwork decorates the home's exterior at several focal points. A small enclosed brick entry porch is located on the eastern end of the north elevation. It has a doric corner support and sweeping copper roof. Ten drawings are included in the set; north, south, and combined east and west elevations; basement and plot, first floor, and second floor plans; Section A-A and interior details; as well as three plans for alterations and additions that do not appear to have been completed. Basement and plot plans include the parcel layout, foundation wall section, storage areas, boiler room, closets, and non-excavated areas. The first floor plan identifies the flagstone entry porch, vestibule, front hall, coat closet, toilet, living and dining rooms, kitchen, two-bay garage, rear flagstone patio, and a terrace with colored cement floor. The second floor plan has three chambers with oak floors, two bathrooms, and a number of closets and wardrobes. A pair of french doors in the third chamber lead onto a sun deck over the garage. The Section A-A and interior detail plan includes a basement, first, and second level thru-section of the home, as well as a number of drawings illustrating the house's important interior details.

Dimensions Primary Dimensions (height x width): 14 1/4 x 20in. (36.2 x 50.8cm)