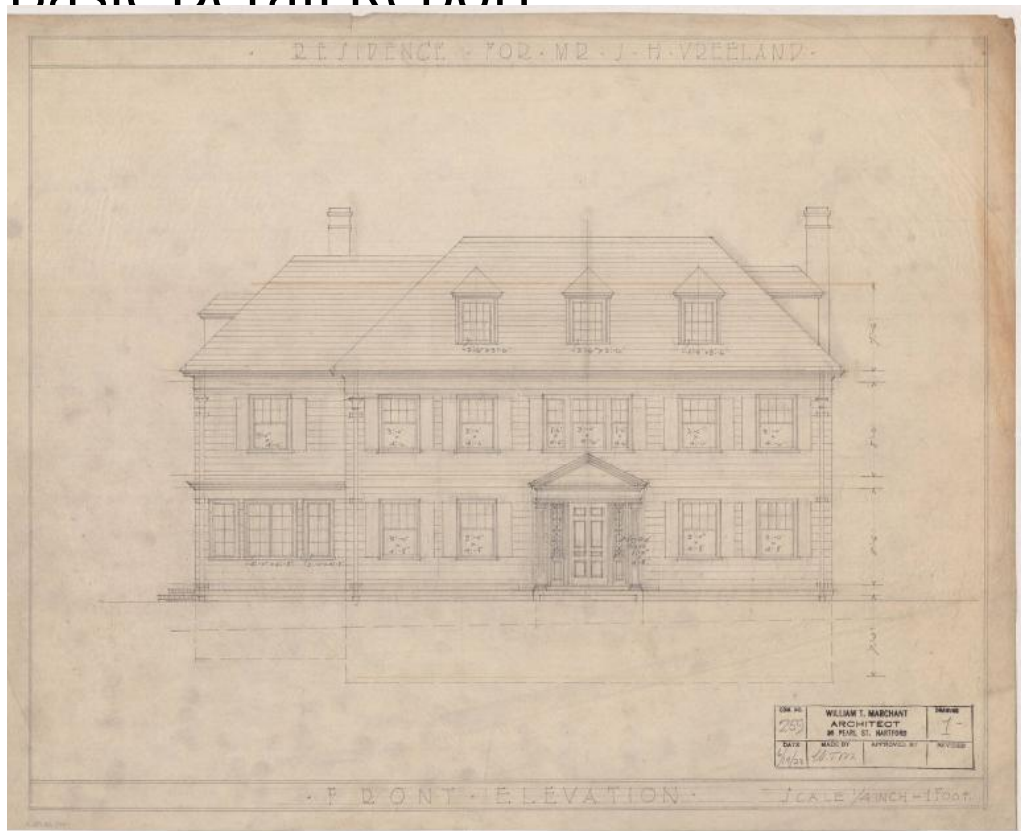


# Basic Detail Report



## Title House for John H. Vreeland, 27 Walbridge Road, West Hartford

Date 1923-1924

Primary Maker William T. Marchant

Medium Pencil on tracing paper, some with orange dimension lines

Description Plans for a two-story Colonial Revival house with a hipped roof, pedimented dormers, and two chimneys. Most of the windows are eight-over-eight double-hung sash. The plans include north, south, east, and west elevations, cellar, first floor, second floor, and attic plans. The cellar includes storage, a heater, a coal room, a laundry room, a cold room, a preserves room, a toilet, and a closet. Included on the first floor are a sun parlor, living room, dining room, butlers pantry, kitchen, another pantry, porch, hatchway, two closets, an additional coat closet, and another toilet. The second floor has a

# Basic Detail Report

sitting room, four chambers, a sleeping porch, two baths and six closets. The

attic is comprised of two maids' rooms, two unfinished sections, a bath, and

three closets. Interior drawings include portions of the living room, dining room,

front hall, butler's pantry, a staircase, and windows.

Dimensions Primary Dimensions (height x width): 21 x 31 in. (53.3 x 78.7cm), or

smaller.